



Installation Reference Picture Guide

www.DynasysAPU.com



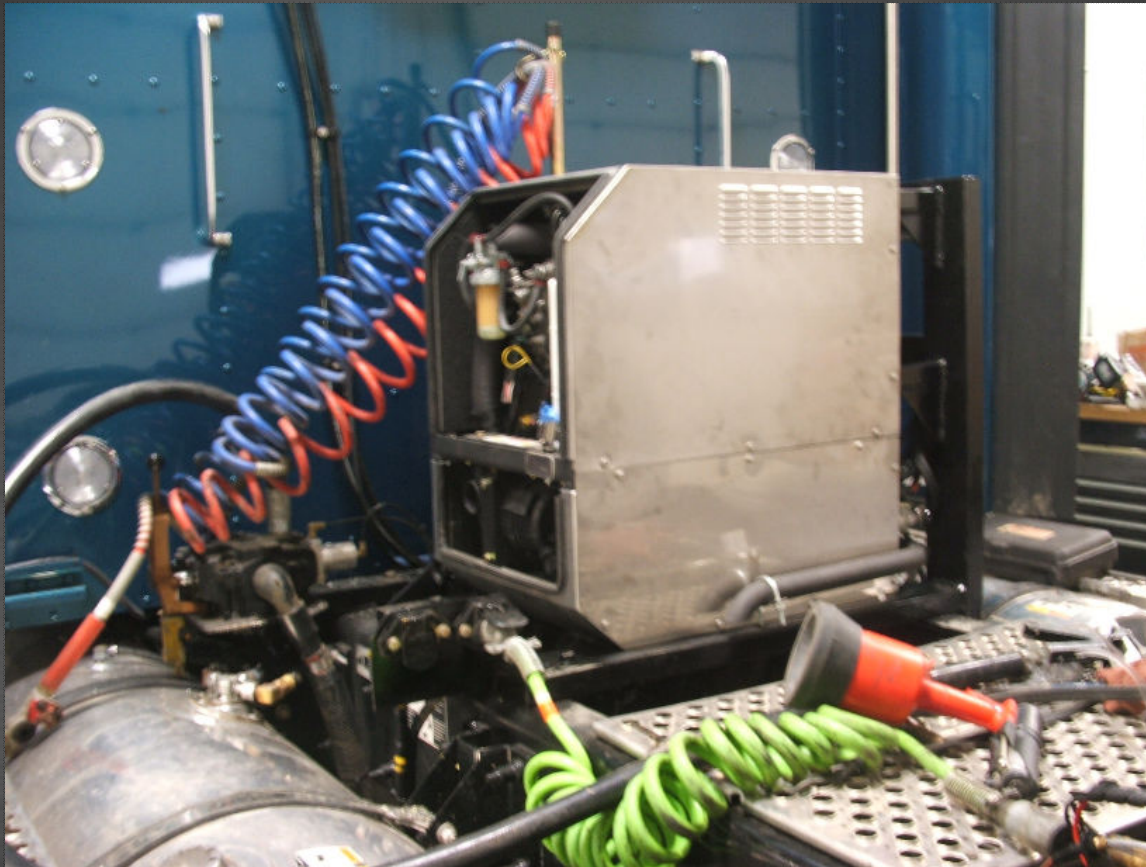
Order of Contents

- **APU Engine Cabinet Locations**
 - Above frame
 - Custom
 - Under bunk
 - Traditional
- **Bunk Component Locations**
 - Traditional
 - Bunk modifications
- **HVAC and Air Distribution Options**
 - Traditional venting systems
 - Shared and divided venting systems
- **Condensor Mounting Locations**
 - Traditional
 - Remote and APU cabinet mounting locations
- **Fuel delivery Options**
 - Pipe thread fuel Tee system
 - Standpipe system

APU Engine Cabinet Locations

- **APU Engine Cabinet Locations**
 - **Above frame**
 - **Custom**
 - **Under bunk**
 - **Traditional**

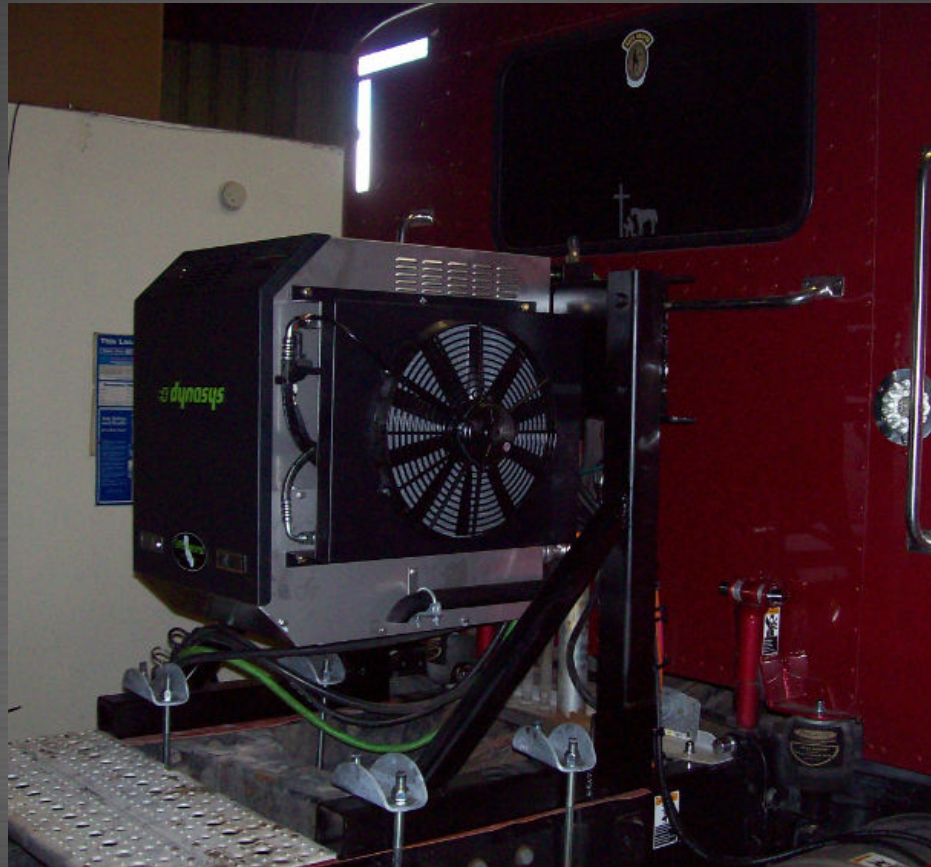
Above Frame APU Cabinet Assembly



Above Frame APU Cabinet Assembly



Above Frame APU Cabinet Assembly



Above Frame APU Cabinet Assembly



Above Frame APU Cabinet Assembly



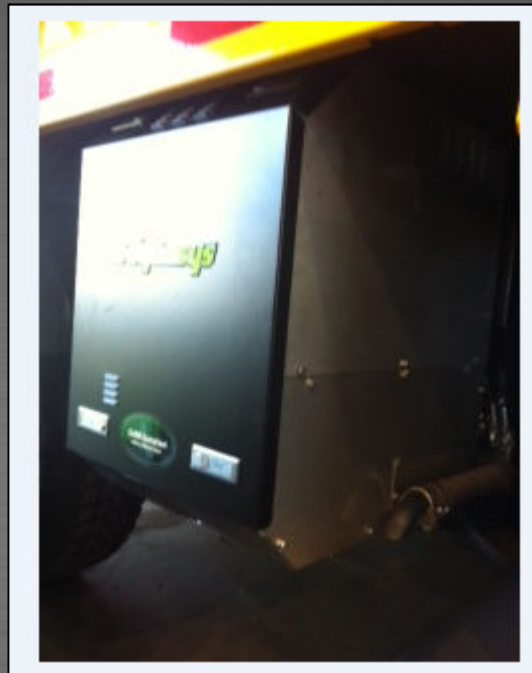
Crane install application / APU only



Crane install application / APU only



Snow Plow Application



Freightliner glider w/ functional catwalk and running boards



Freightliner glider w/ functional catwalk and running boards



Freightliner glider w/ functional catwalk and running boards



Volvo under bunk with direct bolt (upper), lower clamp mounting



Volvo under bunk with direct bolt (upper), lower clamp mounting



Volvo under bunk with direct bolt (upper), lower clamp mounting



Volvo direct frame mount / behind pass side step fairing



80's Model Cab Over under bunk mounting



Car Hauler under passenger step area



Car Hauler under passenger step area



Car Hauler under passenger step area



Car Hauler under passenger step area



Car Hauler under passenger step area with step kit



Car Hauler under passenger step area with step kit



Car Hauler under passenger step area with step kit



Expeditor under box w/ clamp mounting (APU Gen Set only)



Pass side step area with direct frame mounting



Traditional Frame Clamp mounting



Traditional Frame Clamp mounting



Traditional Frame Clamp mounting



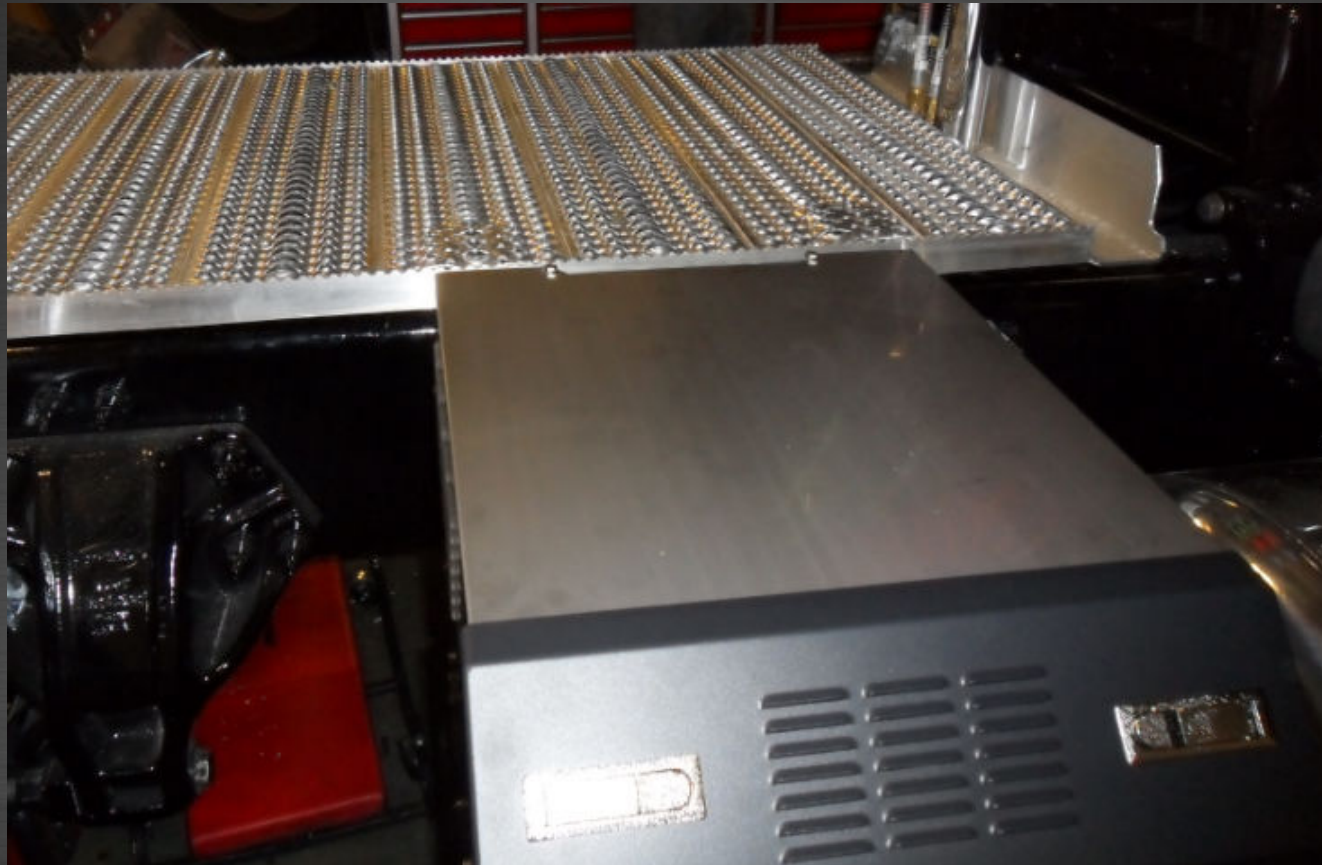
Traditional Frame Clamp mounting



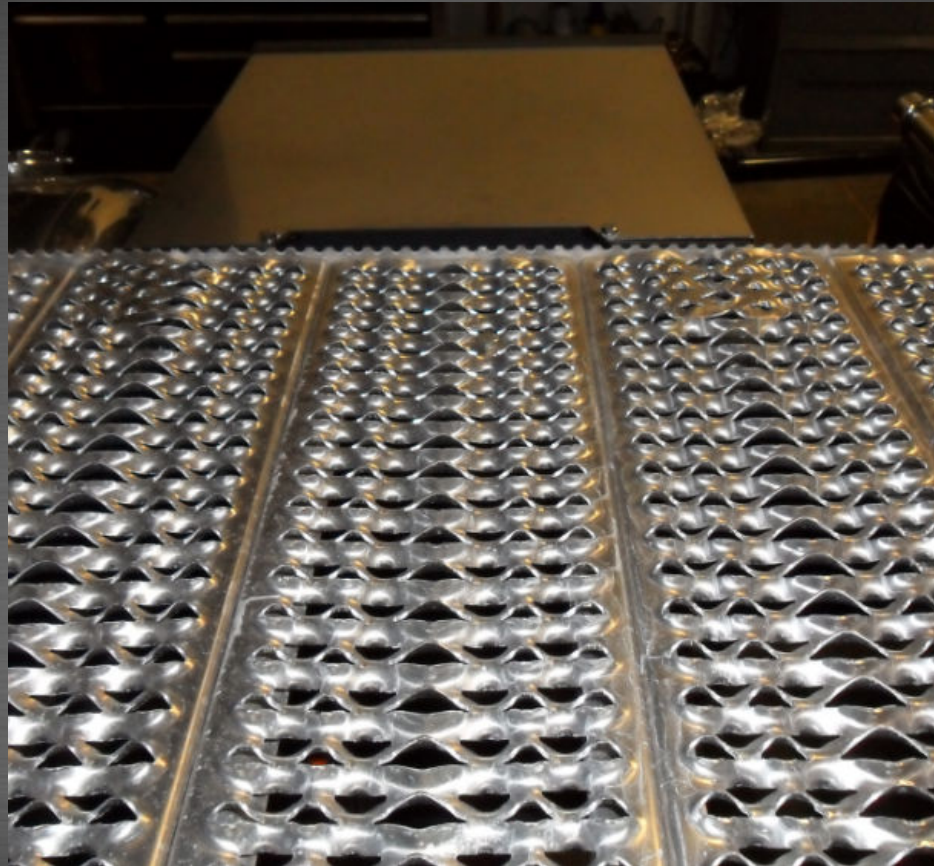
Traditional Frame Clamp mounting



Clamp mounting with thick catwalk /clamps hidden below cat walk



Clamp mounting with thick catwalk /clamps hidden below cat walk



Traditional Frame Clamp mounting w/ cat walk notched



Traditional Frame Clamp mounting w/ step kits & condenser



Direct frame mounting with step kits



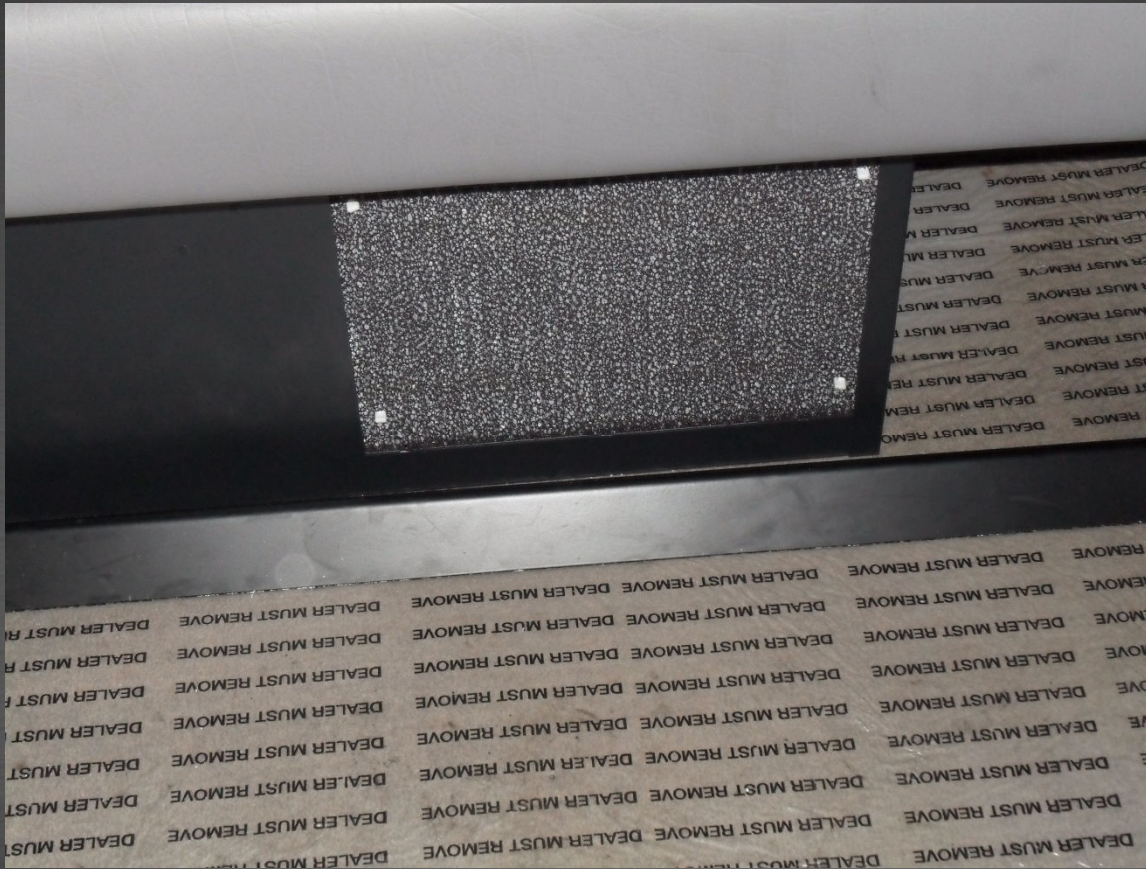
Direct frame mounting using RM apu bracket w/ headache rack



Bunk Component Locations

- **HVAC Locations**
 - **Traditional Locations**
 - **Bunk Modifications**

Under bunk forward most location



Under bunk forward most location



Under bunk forward most location



Couch bunk w/carrier unit replacement system



Under bunk forward most location



Under bunk forward most location



Under bunk forward most location



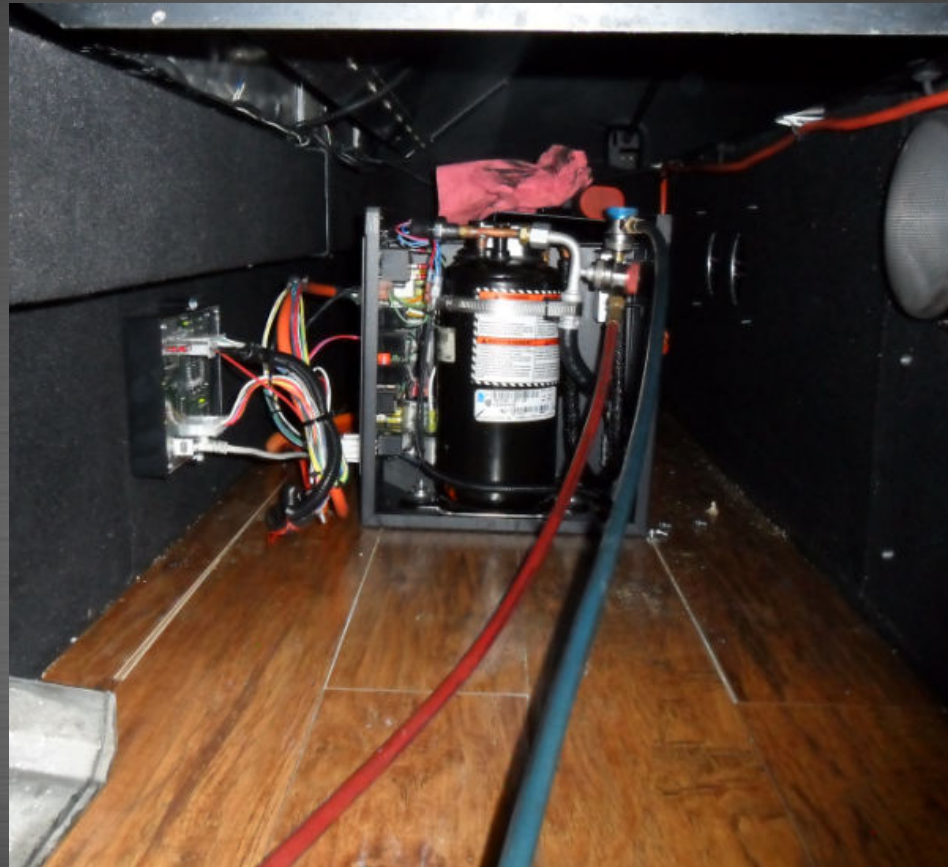
Under bunk most forward location



Under bunk most forward location



Show truck w/ wood flooring



Volvo- pass side cargo area



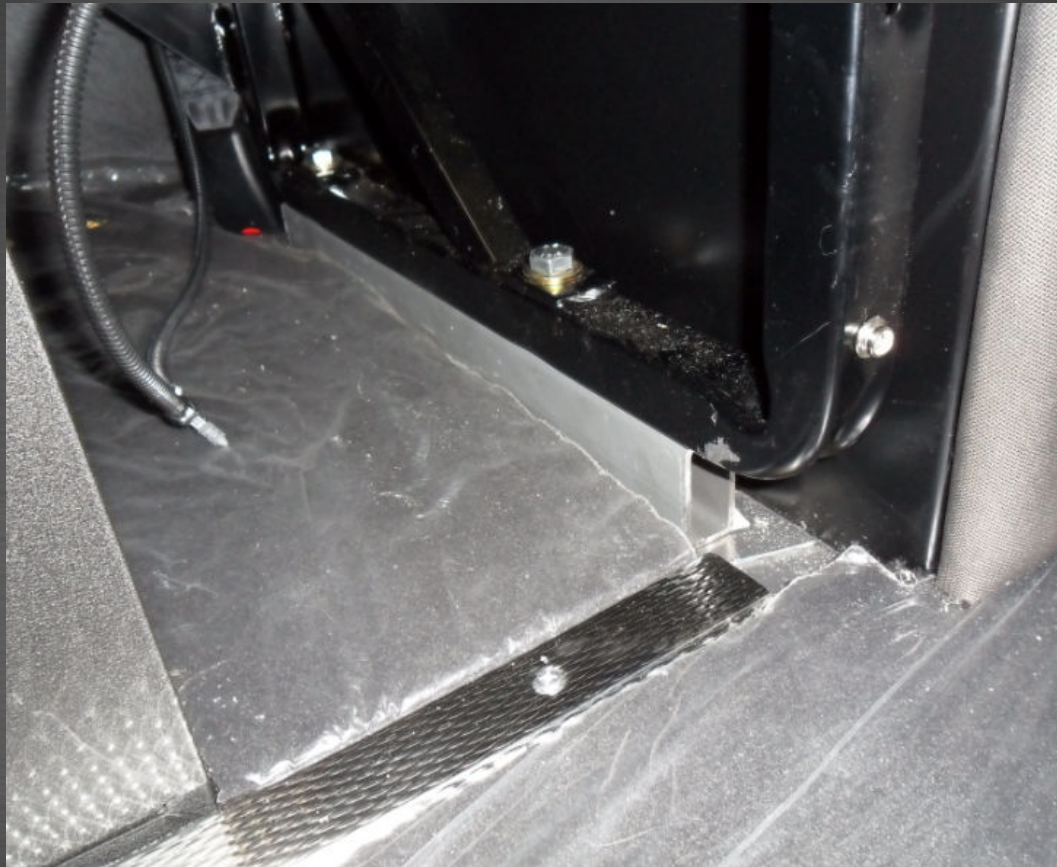
Volvo- pass side cargo area



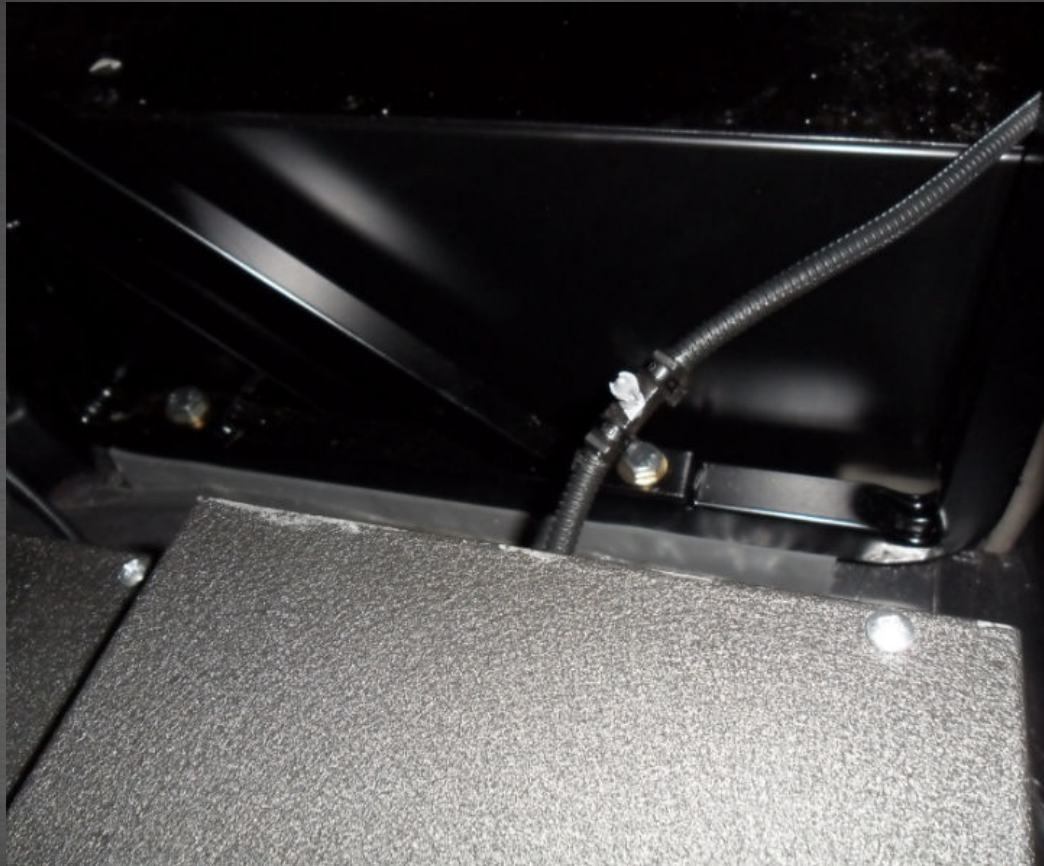
Couch bunk, Couch frame lifted 2 inches for HVAC Clearance



Couch bunk, Couch frame lifted 2 inches for HVAC Clearance



Couch bunk, Couch frame lifted 2 inches for HVAC Clearance



HVAC unit modification- OE rear unit non-operational



HVAC unit modification- OE rear unit non-operational



Couch bunk - OE rear unit non-operational



HVAC Unit between benches



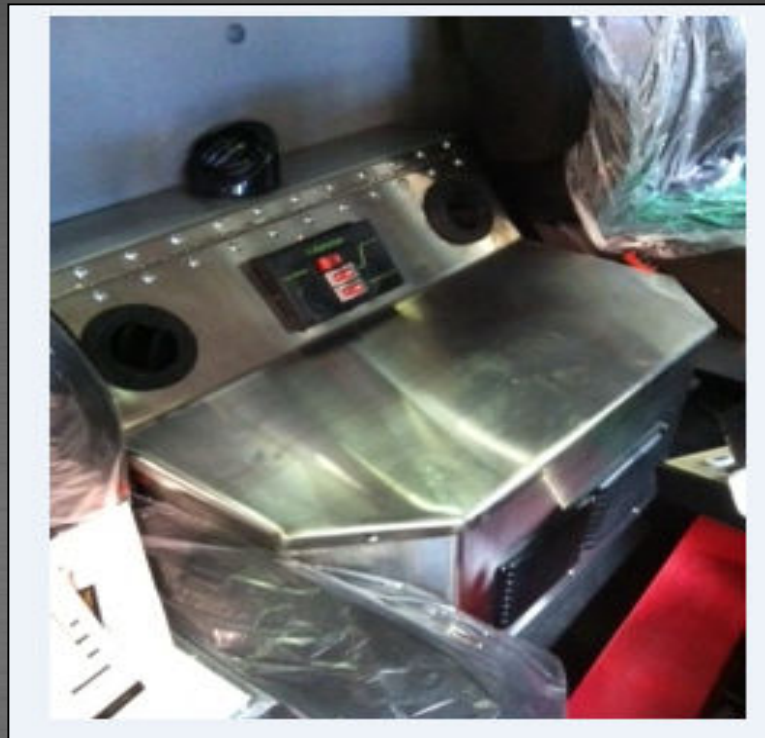
HVAC Unit between benches with cover



Snow Plow Application



Snow Plow Application



Snow Plow Application



Freightliner Glider with HVAC Drop Pan



Freightliner Glider with HVAC Drop Pan



Bunk Component Locations

- **CCU Locations**
- **Traditional Air Delivery Systems**
- **Dynasys / OE Air Delivery Systems**
- **Shore Power module**
- **Duplex outlet locations**

Vent and CCU –driver side bulkhead



Vent and CCU –driver side bulkhead



Vent and CCU –driver side bulkhead



Vent and CCU –driver side bulkhead



Vent plenum—driver side bulkhead



Vent plenum—driver side bulkhead



CCU located below factory rear control panel



CCU located on rear factory control panel



CCU, vent located on factory control panel



CCU and vent located on and below factory control panel



Ducting run inside closet panel section



Closet panel w/ hidden ducting



Control panel modified with CCU, vent locations – driver side



CCU mounted driver side bulkhead near factory control panel



CCU located on driver side bulk head for OE refrigerator



CCU and receptacle mounted on pass side accessory panel



CCU and receptacle mounted on pass side accessory panel



Vent location- pass side panel CCU & vent



CCU and vent located on driver side bunk wall



Snow Plow Application



Vent located on pass side panel



Vent located mid level on pass side bulkhead



Vent located mid level on pass side bulkhead



Ducting routed to mid level vent location



Vent locations driver side above OE refrigerator



Vent locations pass side below OE refrigerator



Vent located on driver side bulkhead with hidden ducting



Vent located pass side bulkhead



Vent located low level driver side



Tower section location- pass side bulkhead



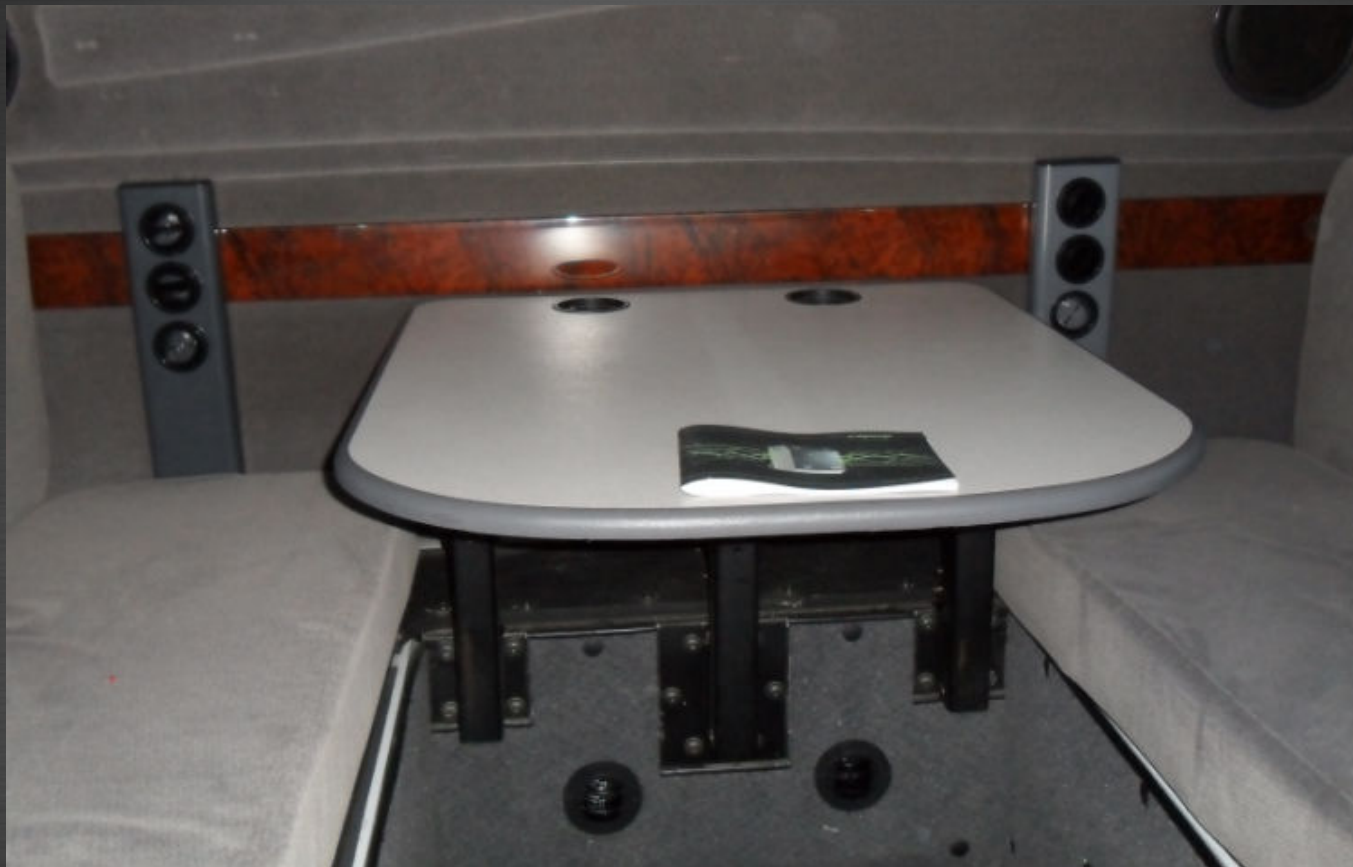
Tower section location- pass side cargo door



Ducting route for tower section & lower pass side OE vent



Towers location- rear bunk wall & two lower vents under table



Ducting route for pass side tower section



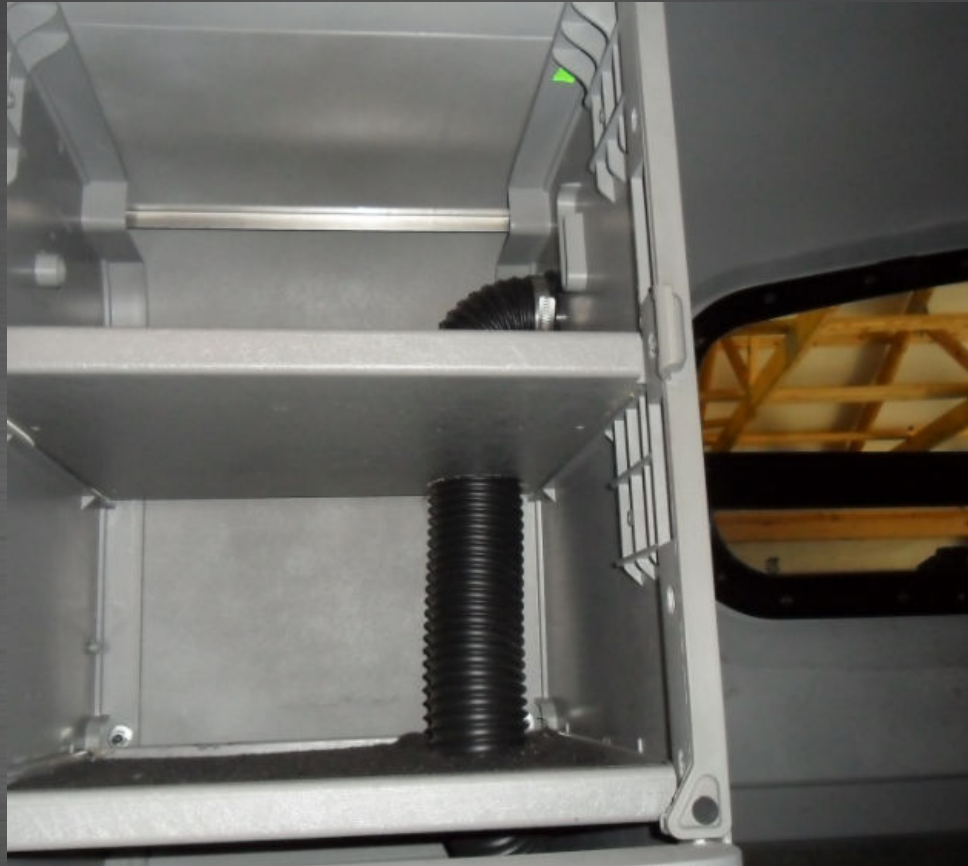
Vent location– upper pass side bulkhead



Vent locations- upper & mid pass side bulkhead



Ducting route for upper vent location



Ducting route for upper & mid level vent locations



Rear mid level vent location - pass side corner



Rear mid level vent location - pass side corner



Vent location – upper level, pass side bulkhead



Vent location - mid level pass side bulkhead



Vent location- driver side head board area



Vent location- upper level driver side bulkhead



Vent location - pass side bulkhead with hidden ducting



Vent location- driver side bulkhead mid & upper vent



Vent location- pass side foot board area



Vent location – pass side bunk wall mid & upper vent



Vent location- pass side bulkhead mid & upper vent



Vent location- pass side bulk head mid vent



Vent location- pass side bulk head mid & upper vents



Vent location- pass side bunk OE lower vent



Vent location- pass side duct routing



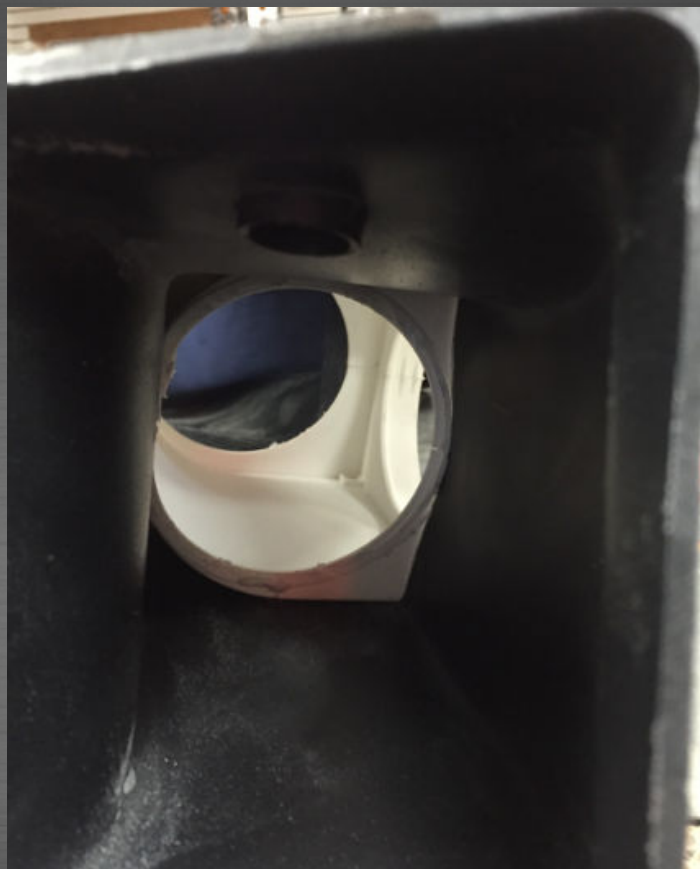
OE modification- pass side air distribution w/ diverter door to separate OE from Dynasys HVAC units



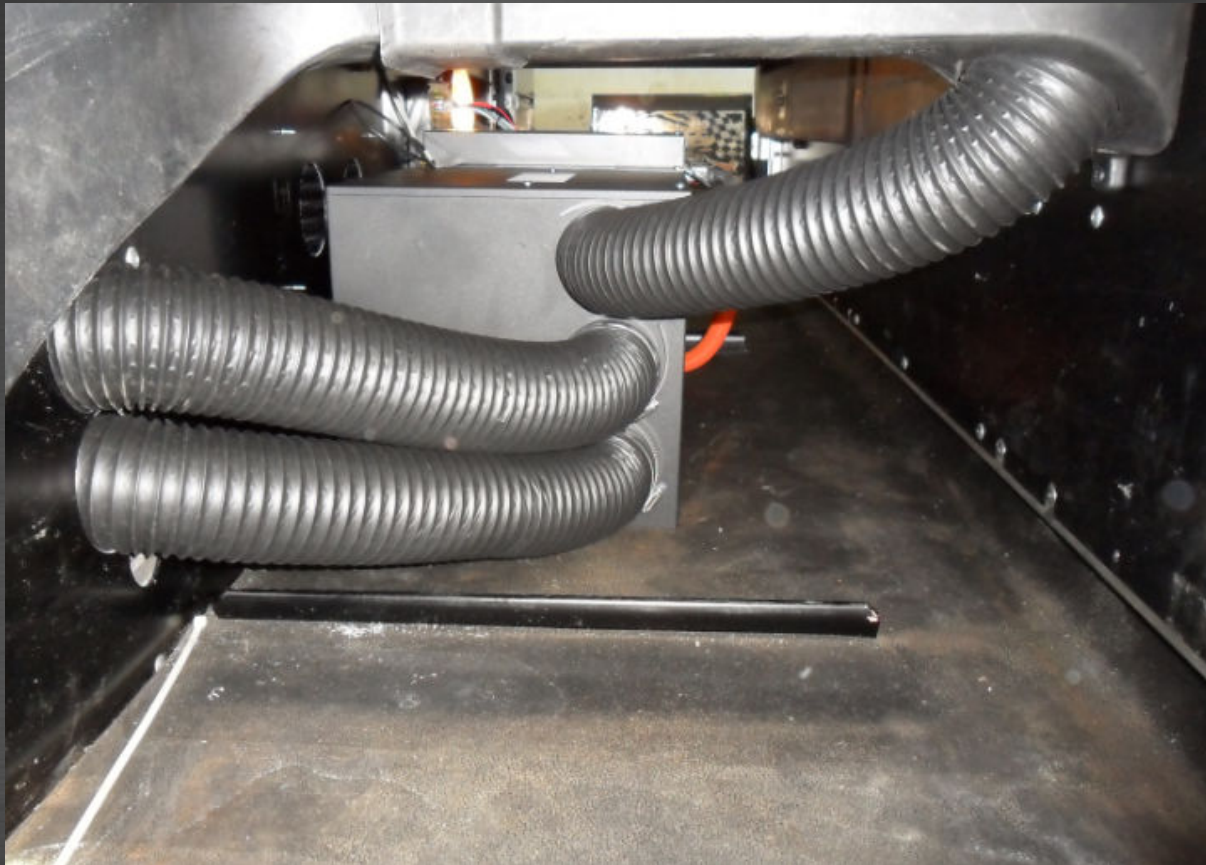
OE modification- pass side air distribution w/ diverter door to separate OE from Dynasys HVAC units



OE modification- pass side air distribution w/ diverter door to separate OE from Dynasys HVAC units



OE modification- pass side air distribution w/dam to separate OE from Dynasys HVAC units



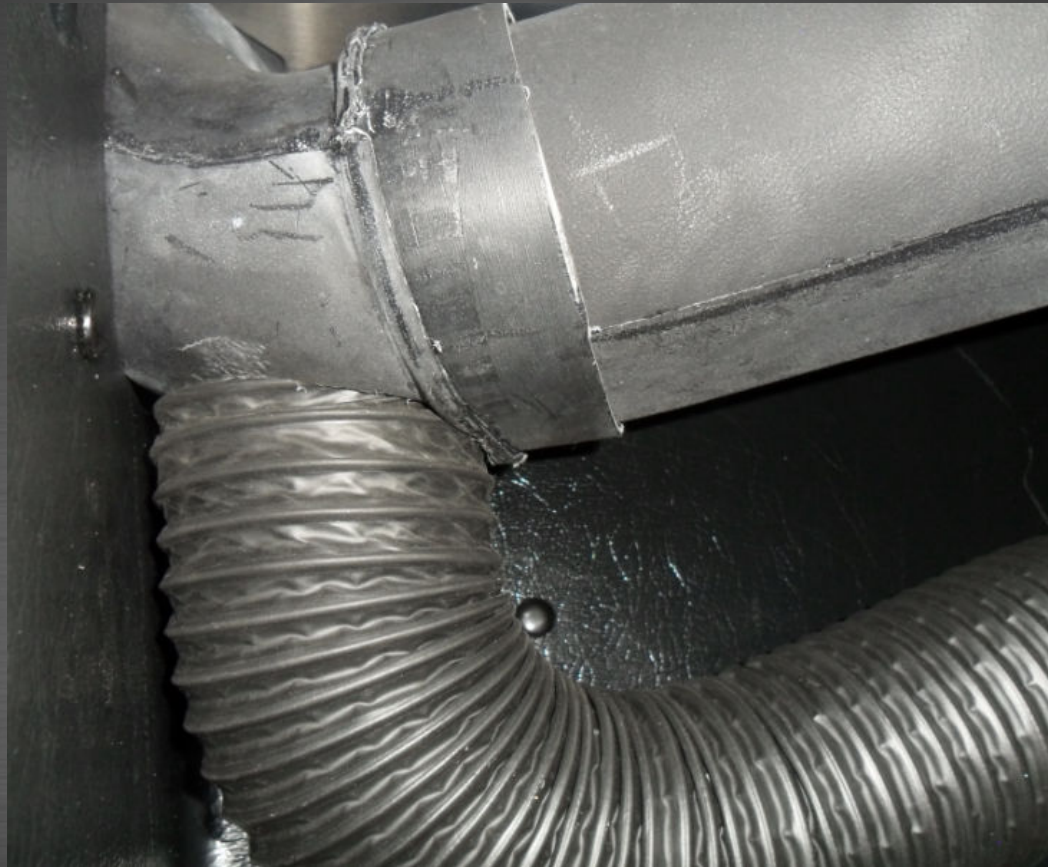
OE modification- pass side air distribution w/dam to separate OE from Dynasys HVAC units



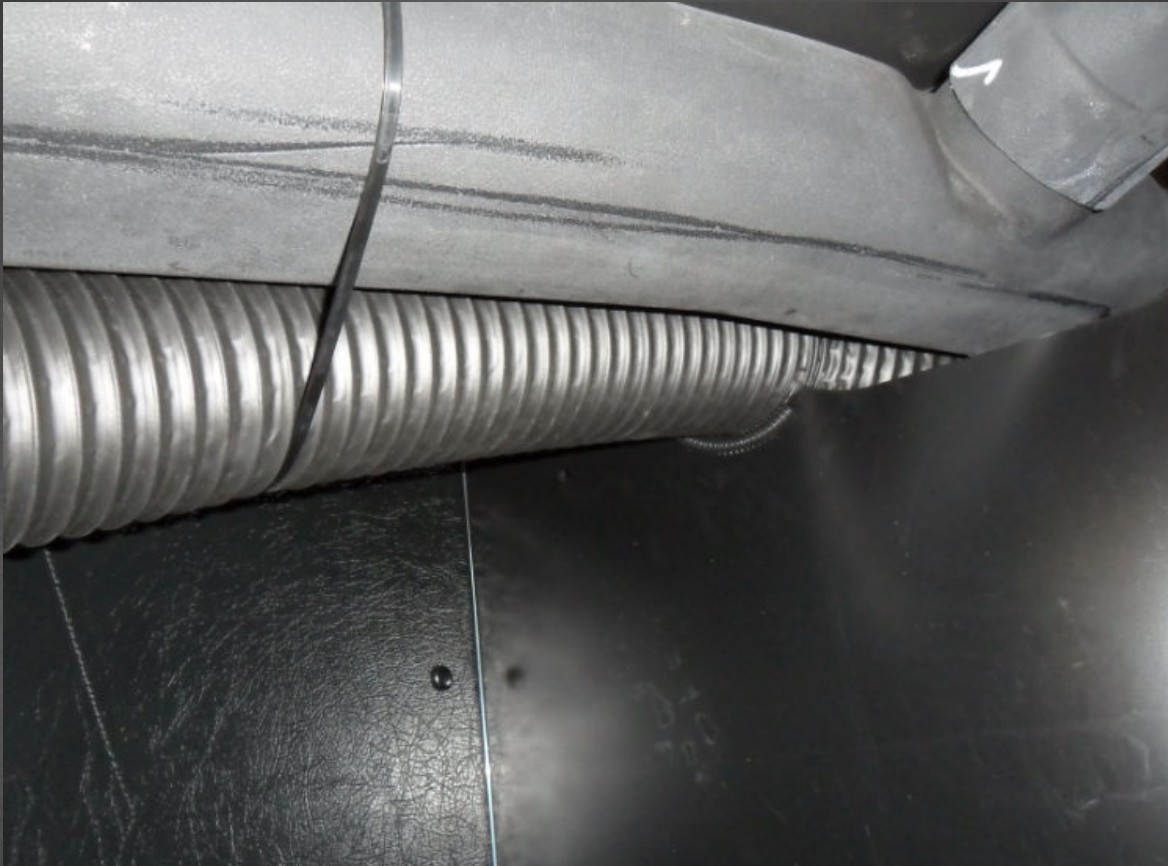
OE modification- pass side air distribution w/o dam to separate OE from Dynasys HVAC units



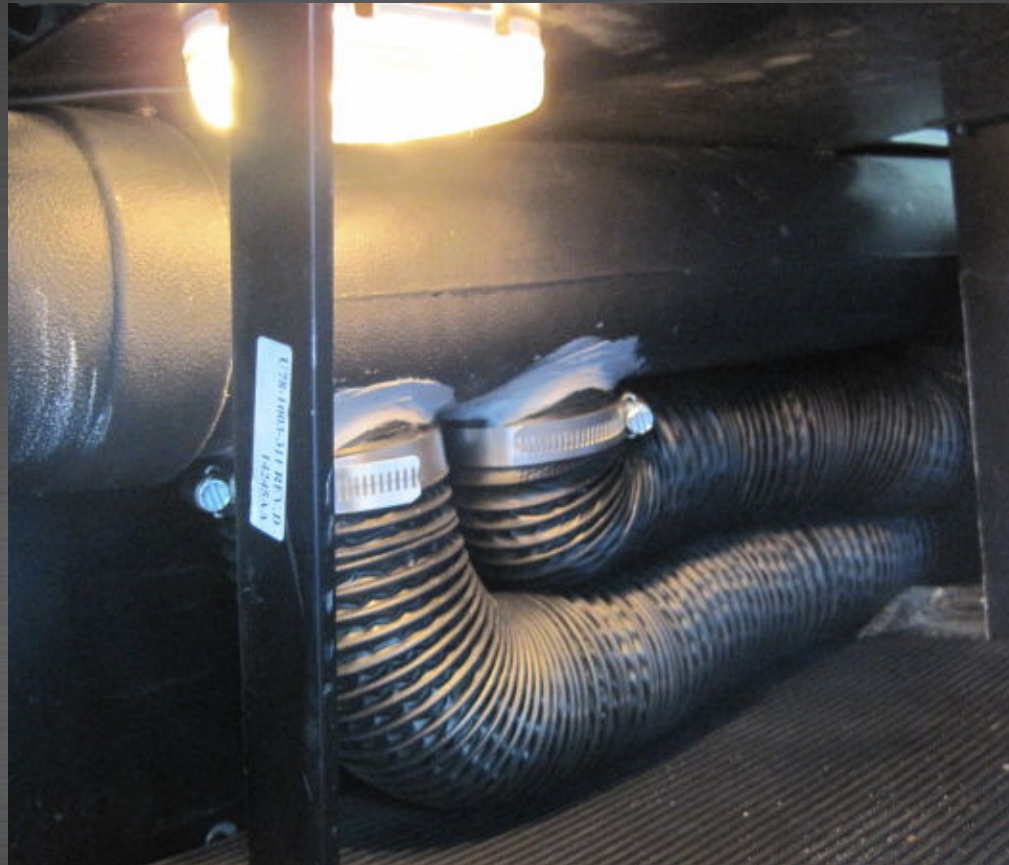
OE modification- pass side air distribution w/dam to separate OE from Dynasys HVAC units



Duct routing to OE pass side vent location



OE modification- pass side air distribution w/dam to separate OE from Dynasys HVAC units



OE modification- pass side air distribution w/dam to separate OE from Dynasys HVAC units- mid & upper OE vents



OE modification- pass side air distribution w/separation of OE & Dynasys HVAC units



OE modification- driver side air distribution w/separation of OE & Dynasys HVAC units



Shore power & PDC custom mounting plate



Shore power mounting behind bed bunk wall- center panel



Shore power mounting – pass side cargo area



Shore power mounting – pass side cargo area



Shore power mounting behind bed bunk wall- center panel



Shore power mounting rear bed bunk wall



Shore power receptacle through rear bunk wall –pass side



Duplex location- pass side wall mount inside closet



Duplex location- pass side wall mount inside closet



Duplex location – pass side lower shelf area



Duplex location – pass side lower shelf area



Duplex location – pass side lower shelf area



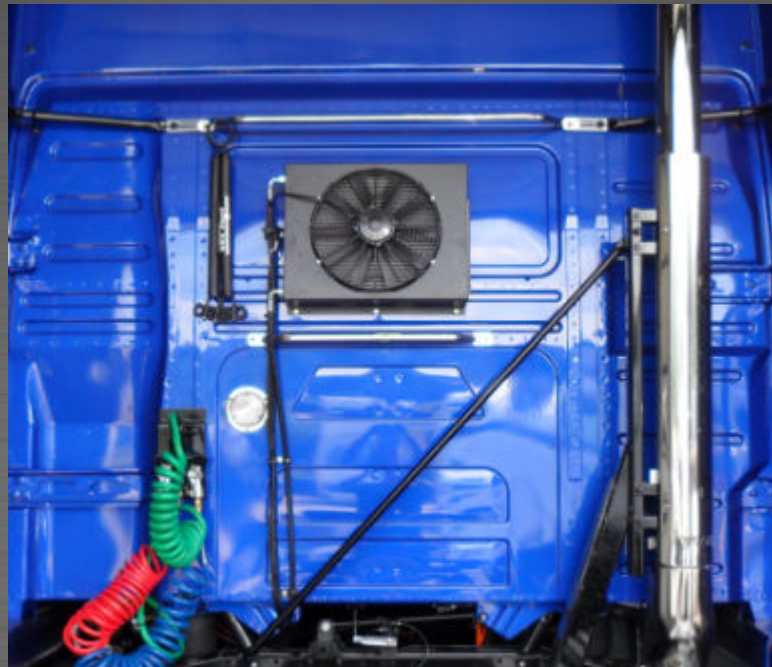
Duplex location – pass side lower bunk bed area



Condensator Mounting Locations

- Condensator Mounting Locations
 - Traditional
 - Remote and APU cabinet mounting locations

Condenser location- center area of bunk wall



Condenser location- center area of bunk wall



Condenser location- center area of bunk wall



Condenser location- center area of bunk wall above headache rack



Condenser location- direct mounted on APU cabinet assembly



Condenser location- direct mounted on APU cabinet assembly



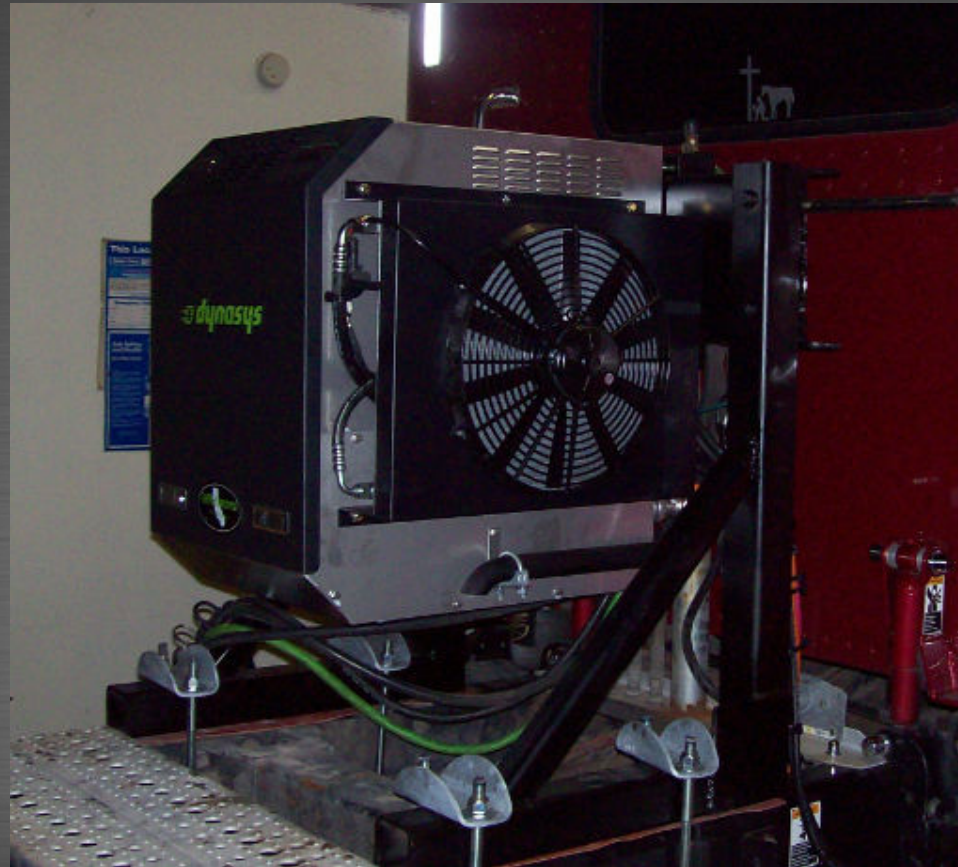
Condenser location- direct mounted on APU cabinet assembly



Condenser location- direct mounted on APU cabinet assembly



Condenser location- direct mounted on APU cabinet assembly



Car Hauler under passenger step area with step kit



Car Hauler under passenger step area with step kit



Car Hauler under passenger step area with step kit



Condenser location- remote mounted w/ custom bracket



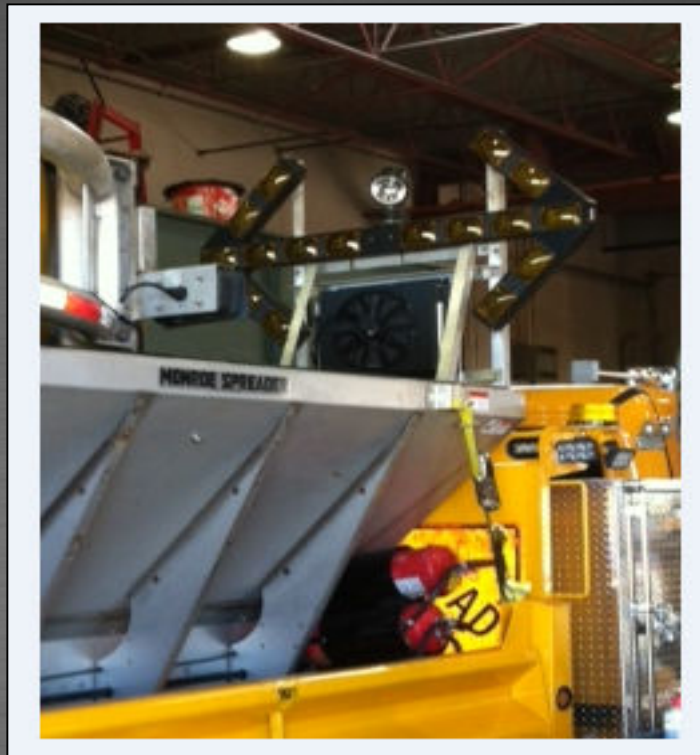
Condenser location- remote mounted w/ custom bracket



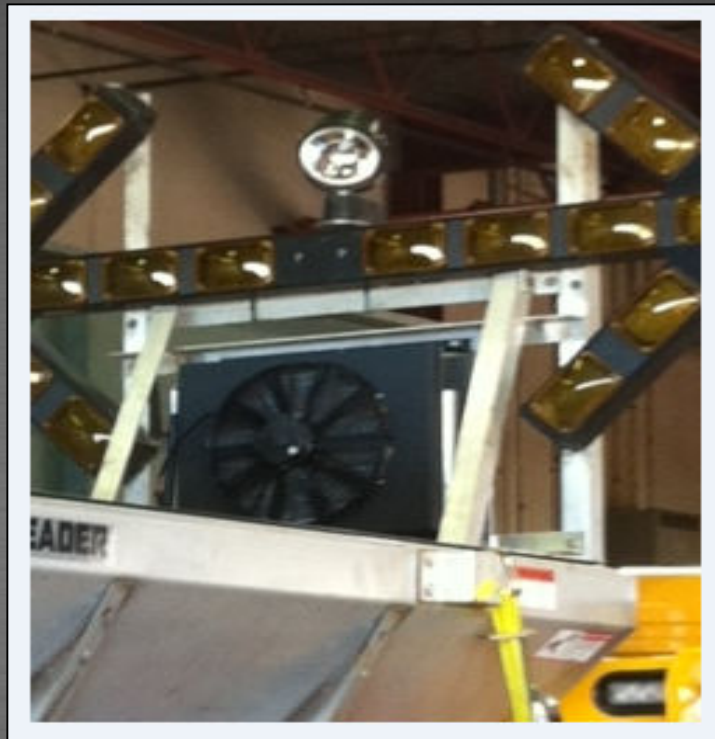
Condenser location- remote mounted on lower headache rack area w/ brace to protect fan assembly



Snow Plow Application



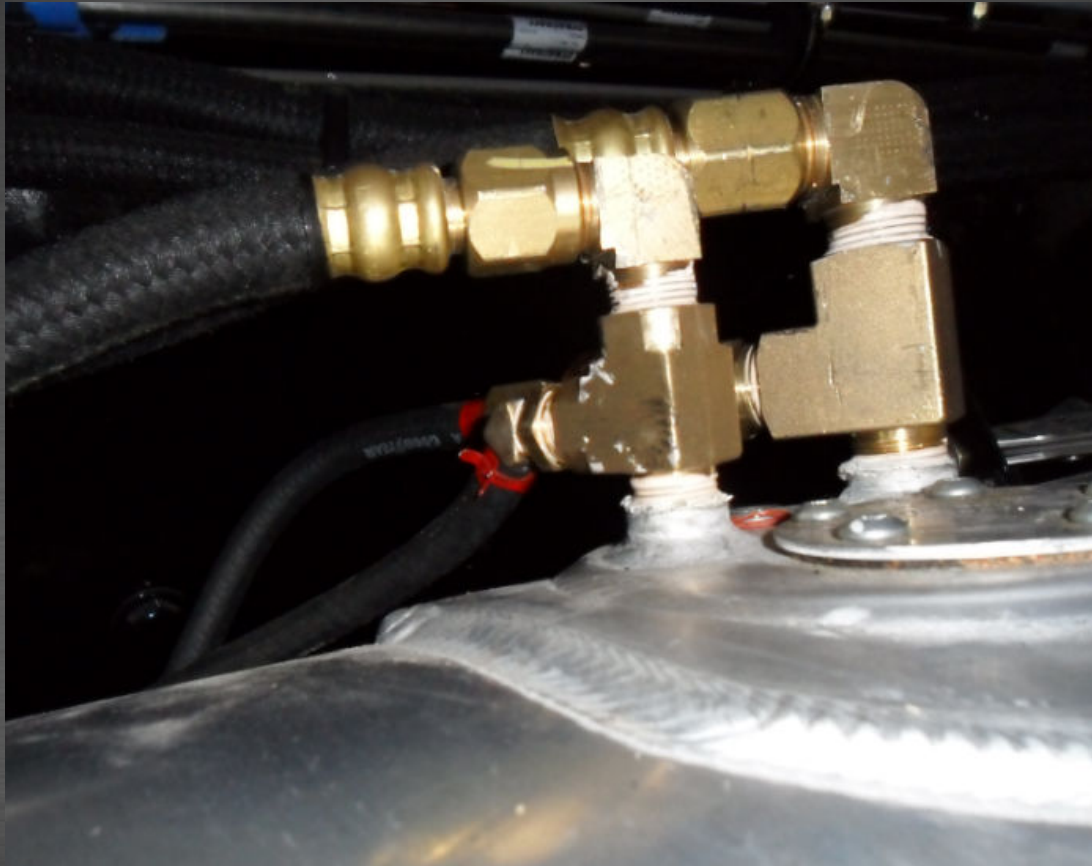
Snow Plow Application



Fuel delivery Options

- **Fuel delivery Options**
 - **Pipe thread fuel Tee system**
 - **Standpipe system**
 - Dual
 - Single

Pipe Thread Tee fitting fuel delivery system



Pipe Thread Tee fitting fuel delivery system



Dual Standpipe fuel delivery system



Dual Standpipe fuel delivery system



Single Standpipe fuel delivery system

