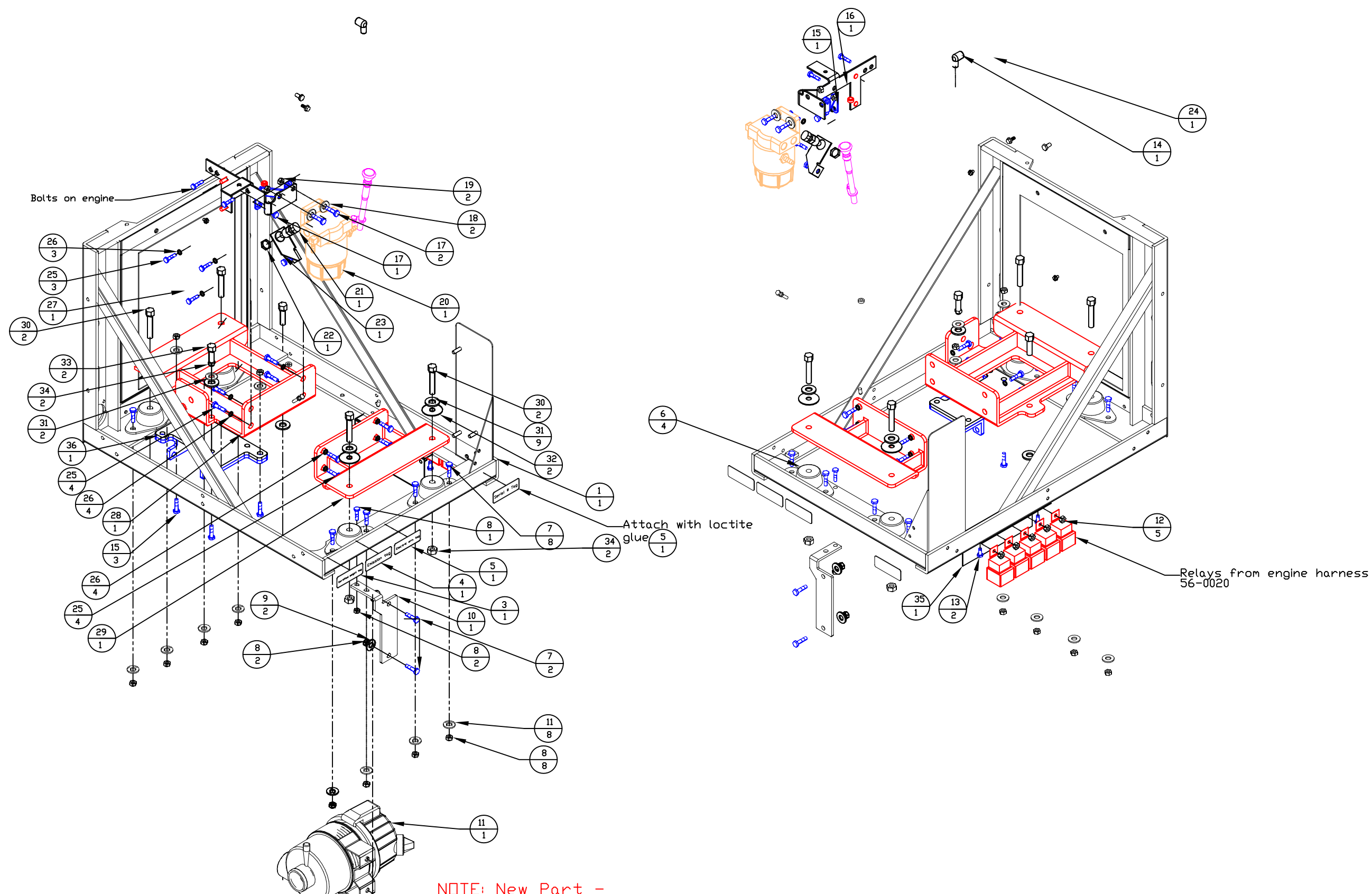


frame,engine prep



| | | | |
|----|----|--------------------------------|-----------|
| 36 | 1 | base plate | 57-0002 |
| 35 | 1 | Relay Bracket | 56-0019 |
| 34 | 9 | 3/8" Nut | 54-8303 |
| 33 | 2 | Bolt 3/8" x 1.5" | 54-8344 |
| 32 | 2 | 1.716 ID " Washer | 54-8326 |
| 31 | 9 | 3/8" Washer | 54-8302 |
| 30 | 4 | Bolt 3/8"-16x2.75" | 54-8301 |
| 29 | 1 | Engine nt. front | 56-0003 |
| 28 | 1 | Engine nt. back | 56-0002 |
| 27 | 1 | Crank shaft pulley | 56-0005 |
| 26 | 11 | M10 Lk. Washer | 54-8306 |
| 25 | 11 | M10 x 25 Bolt | 54-8305 |
| 24 | 1 | Coolant plug | 54-8457 |
| 23 | 1 | Bracket | 56-0010 |
| 22 | 1 | Nut | 56-0022 |
| 21 | 1 | RPM Sensor | 54-8067 |
| 20 | 1 | Fuel separator/water separator | 56-0012 |
| 19 | 2 | Nut | 54-8356 |
| 18 | 2 | flat washer | 54-8312 |
| 17 | 3 | Bolt 5/16-17x1 | 54-8308 |
| 16 | 1 | Fuel filter bracket | 56-0013 |
| 15 | 3 | Bolt | 57-0005 |
| 14 | 1 | Elbow fitting | 56-0016 |
| 13 | 2 | Bolt 1/4"x20x.5 | 54-8321 |
| 12 | 5 | KEPS Nut | 54-8345 |
| 11 | 1 | Air filter assy. | 54-8061-B |
| 10 | 1 | Air filter bracket | 54-8146 |
| 9 | 10 | Washer, 5/16 | 54-8309 |
| 8 | 12 | Nut, 5/16 | 54-8310 |
| 7 | 10 | Bolt, 5/16" x 18x1 | 54-8308 |
| 6 | 4 | Electric Warning tag | 54-8060 |
| 5 | 1 | Electric Warning tag | 54-8277 |
| 4 | 1 | Emission tag | 54-8699 |
| 3 | 1 | Certified weight tag | 56-0060 |
| 2 | 1 | Serial # Tag | 57-0023 |
| 1 | 1 | Main Frame | 56-0037 |

NOTE: New Part -
No process sheet required

| | | | | | |
|---|--------------|---------|-------------|----------|------------|
| KEY | | QTY. | DESCRIPTION | PART NO. | Unit Conv. |
| confidential property of PERRIN MANUFACTURING INC. ALLIANCE, NEBRASKA | | | | | |
| unless otherwise specified | | dr. IN. | 9/27/16 | Material | |
| 1 place dec. ± .06" | ck. | Title | | | |
| 2 place dec. ± .032" | APU ASSEMBLY | | | | |
| 3 place dec. ± .016" | angular | ±1° | Engr. Ref. | Part No. | |
| SC | Sheet | 1 of 1 | DYNASYS | 57-1000 | B |