



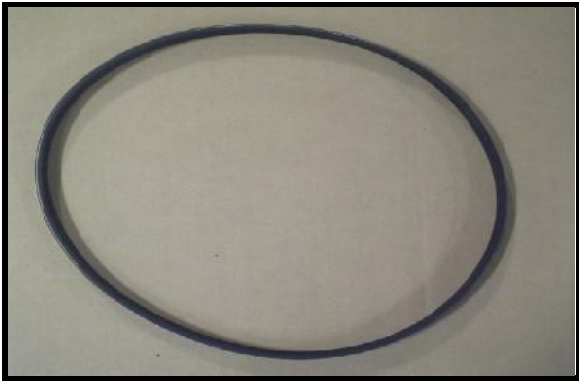
Dynasys Parts Illustrated and Reference Manual

Gen 1 Series

Refer to website or Customer Service for all current part numbers, revisions, and prices.



54-8000 – Yanmar Engine



54-8002-N Generator Belt



54-8003- Blue Exh Sleeve

Refer to website or Customer Service for all current part numbers, revisions, and prices.



54-8004 – Rear generator spacer (2 required)



54-8004 - (Installed)



54-8005-A - Radiator Isolator



54-8005-A - (Installed)



55-8006-A – Safety Cover Switch



55-8006-A - (Installed)

Refer to website or Customer Service for all current part numbers, revisions, and prices.



54-8008 (Small Radiator)

Serial number G1D13350 & under



55-8183 Retrofit Kit (Small Rad w/ hoses & bracketry)

- 54-8008 Radiator**
- 54-8048-C Outlet Hose**
- 54-8049-A Angled Hose**
- 54-8050-C Inlet Hose**

Serial number G1D13350 & under



54-8008-AW- Upsize Radiator

Serial Number G1D13351 & above

Refer to website or Customer Service for all current part numbers, revisions, and prices.



54-8040-A Inline Filler Neck



54-8049-A Rad Hose (eng to filler neck)



54-8556, 54-8484 - Rad hose with Tee



54-8556, 54-8484 (Installed)



54-8557 Rad hose (Rad to filler neck)

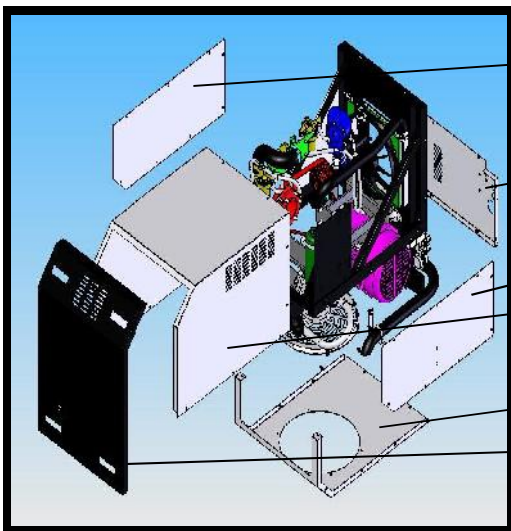
Refer to website or Customer Service for all current part numbers, revisions, and prices.



55-8009-L –Generator Assembly (No longer used) 56-9016 is replacement part.



55-8026-B –Muffler



54-8031-E RH Side

54-8030-G

54-8029-E LH Side

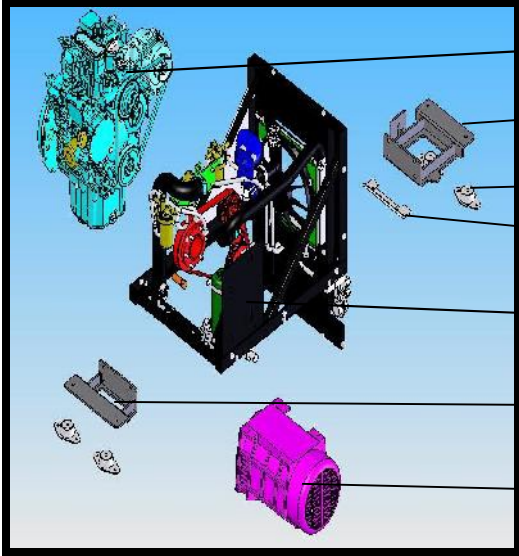
55-8036-E

54-8028-F

55-8493

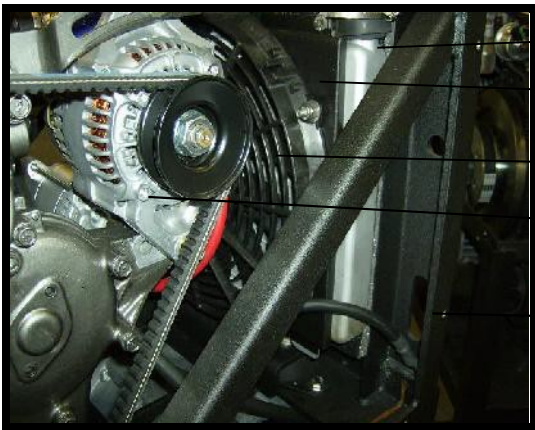
Main APU Engine Panels (Bare)

Refer to website or Customer Service for all current part numbers, revisions, and prices.



Main APU Engine Components

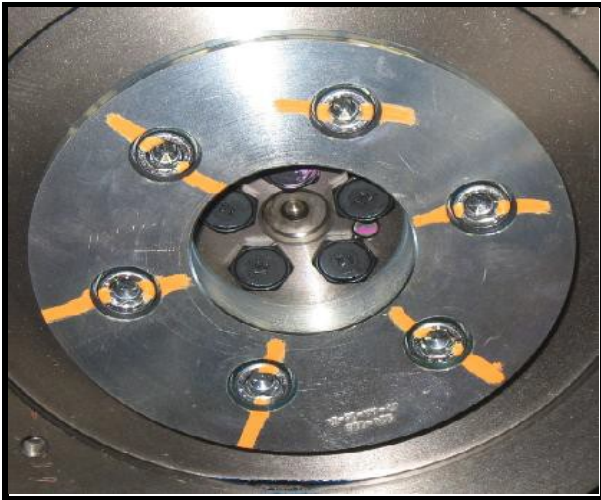
- 54-8000
- 54-8034-G
- 54-8060 (4)
- 54-8176-A
- 54-8051-M
- 54-8033-F
- 56-9016



Radiator, Shroud, Fan, Alternator, Frame

- 54-8008
- 54-8183
- 54-8182
- 55-8410
- 54-8051-M

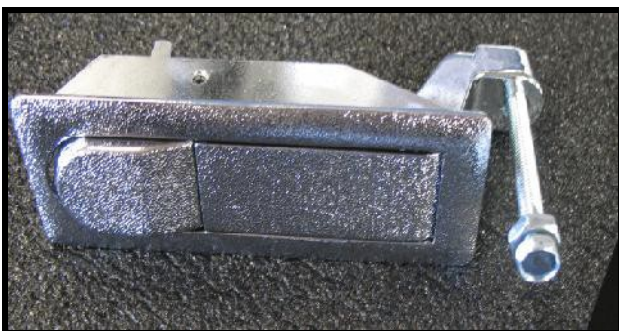
Refer to website or Customer Service for all current part numbers, revisions, and prices.



54-8046 -A – Crank Pulley



54-8047-B, 54-8311 – Gen pulley, QD Bushing

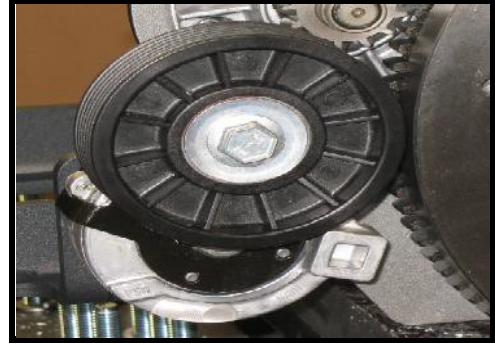


54-8054 Front Access Door Latch (4)

Refer to website or Customer Service for all current part numbers, revisions, and prices.



54-8055-A – Gen Serp Belt Tensioner



54-8055-A (Installed)



54-8058 Exh. Pipe (internal)



54-8059 Exh. Flange (frame)

Refer to website or Customer Service for all current part numbers, revisions, and prices.



54-8060 Frame Isolators (4)



54-8003, 54-8059, 54-8084 (Installed)



54-8061

54-8146

Air Cleaner Assembly, Bracket



55-8065 (Install ready)



54-8065 (Incomplete sensor)

Refer to website or Customer Service for all current part numbers, revisions, and prices.



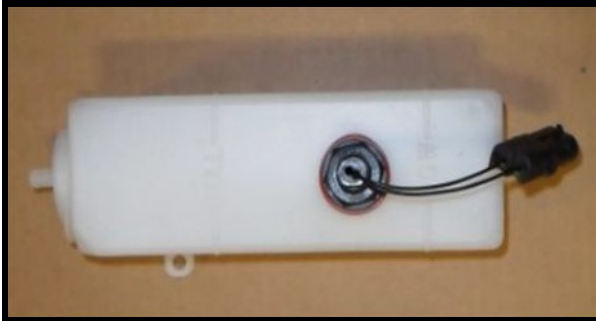
54-8067 – RPM Sensor



54-8067 (Installed)



54-8091-D – O/F Tank



54-8091-D, 55-8065 – Tank w/ sensor

Refer to website or Customer Service for all current part numbers, revisions, and prices.



54-8099-B –Intake Hose (18.5’)
54-8099-A –Intake Hose (23’)



55-8417 – Fuel Filter



55-8417 (Installed)

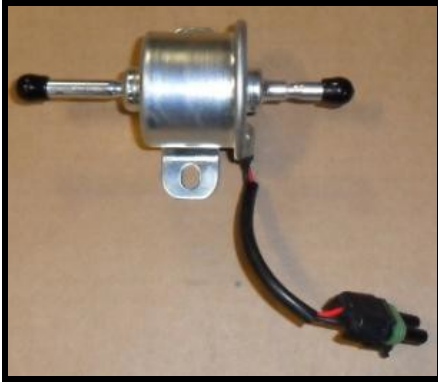


55-8426- Water Separator

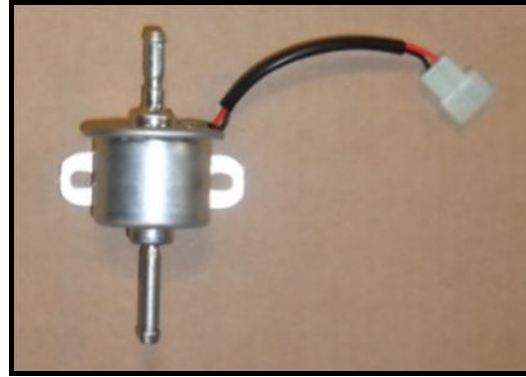


55-8426 (Installed)

Refer to website or Customer Service for all current part numbers, revisions, and prices.



55-8409 –Fuel Pump



54-8409 - (Incomplete Fuel Pump)



Filters and Fuel pump (Installed)



54-8039C – Fuel pump, Filters Bracket



54-8120 - Fuel Bulkhead Fittings



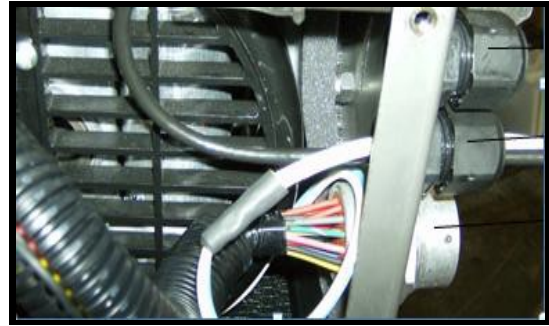
54-8095, 54-8096

**Muffler Hanger Bracket
Muffler Hanger**

Refer to website or Customer Service for all current part numbers, revisions, and prices.



54-8025, 54-8056, 54-8186 (Installed)



54-8178, 54-8179 (Installed)



54-8097

54-8098

54-8107

Tailpipe, Bracket, Clamp

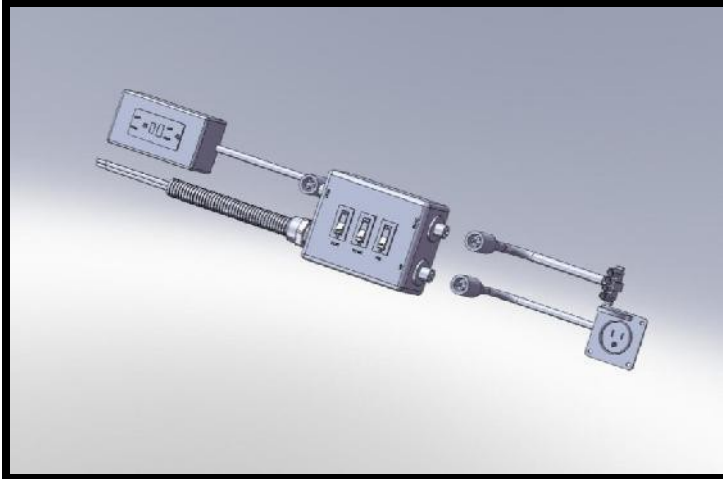


55-8400-A -Gen Capacitor



55-8400-A (Installed)

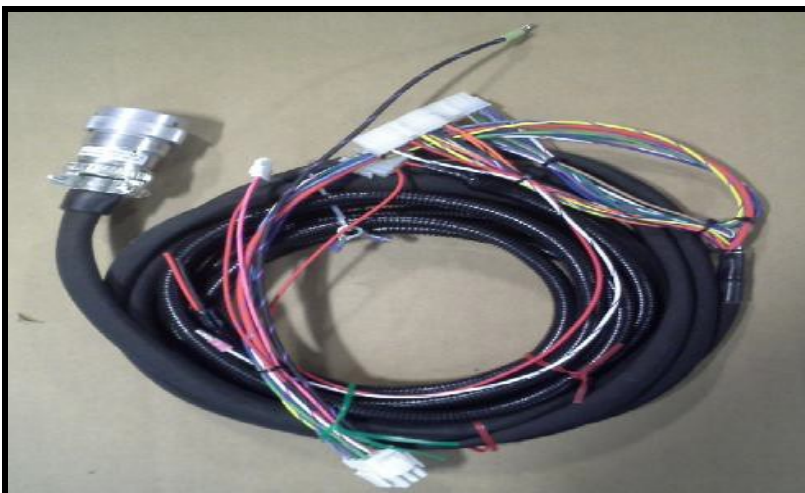
Refer to website or Customer Service for all current part numbers, revisions, and prices.



54-8101-G - APU Power Distribution Center (PDC)

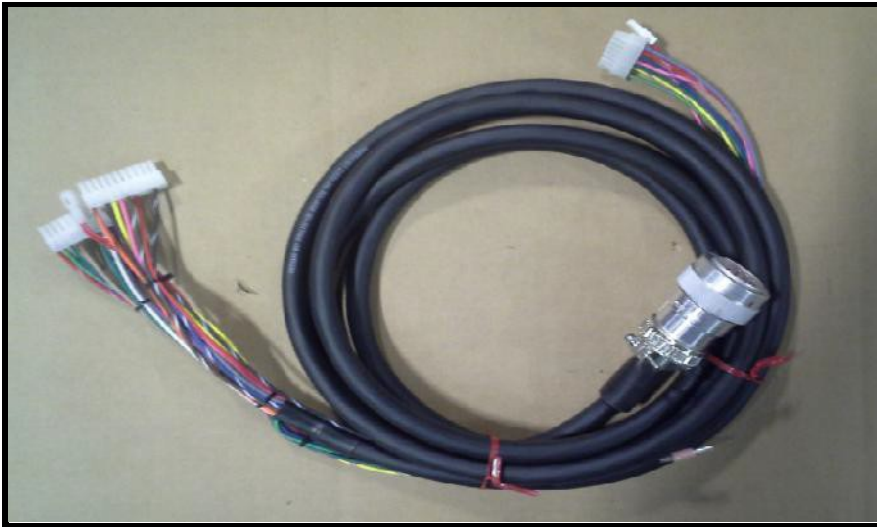


54-8173 (12vdc power cable) Battery to Bunk power cable

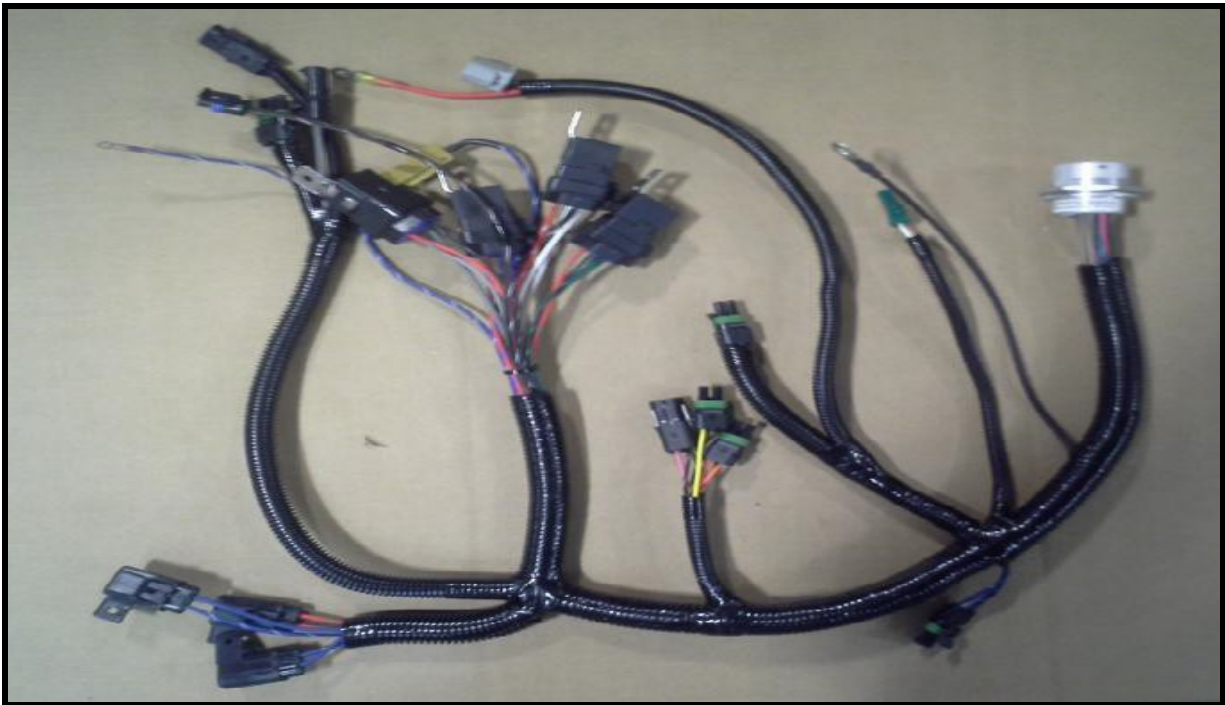


54-8177 TFT-A (Interconnect Harness with Rev D HVAC)

Refer to website or Customer Service for all current part numbers, revisions, and prices.



54-8177 TFT-E (Interconnect Harness- HVAC rev F) used w/ 54-8173



54-8178 TFT – F (APU Engine harness)

Refer to website or Customer Service for all current part numbers, revisions, and prices.

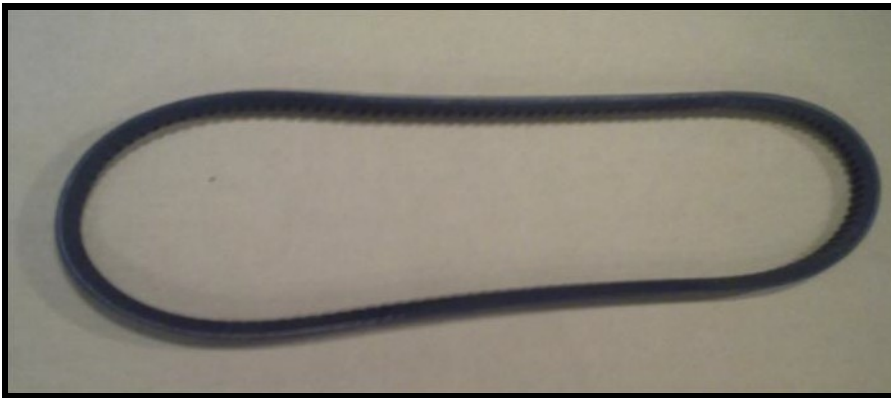


54-8182 – Radiator Fan

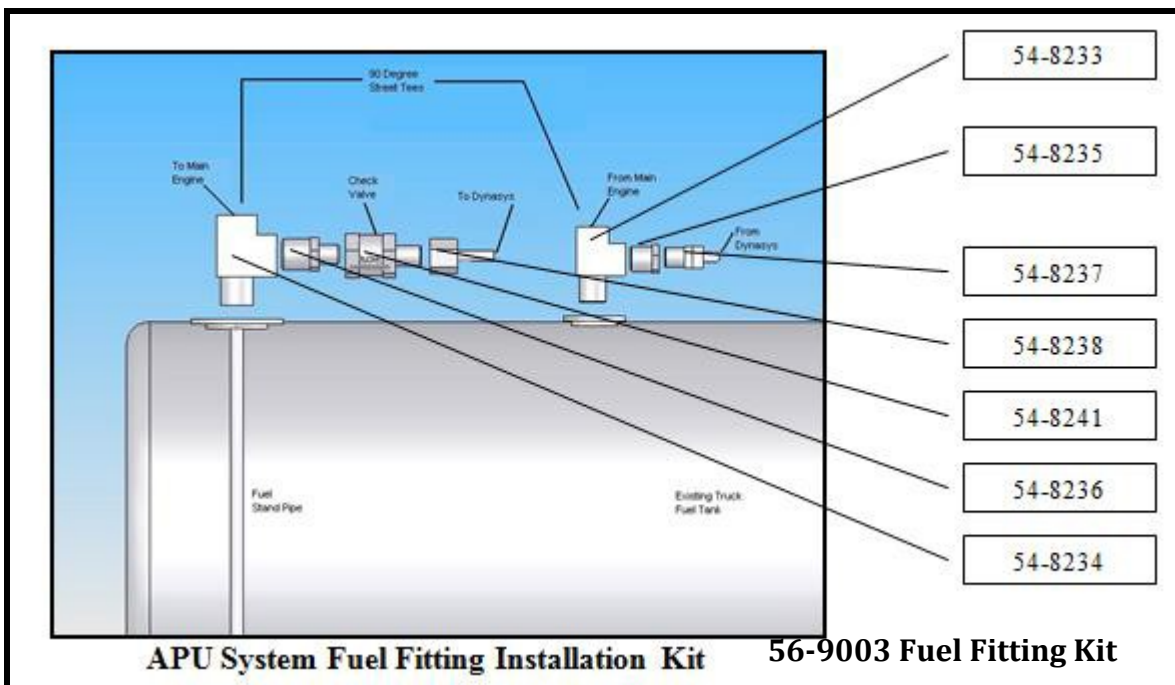


54-8186 – Lower APU Cabinet Fan

Refer to website or Customer Service for all current part numbers, revisions, and prices.

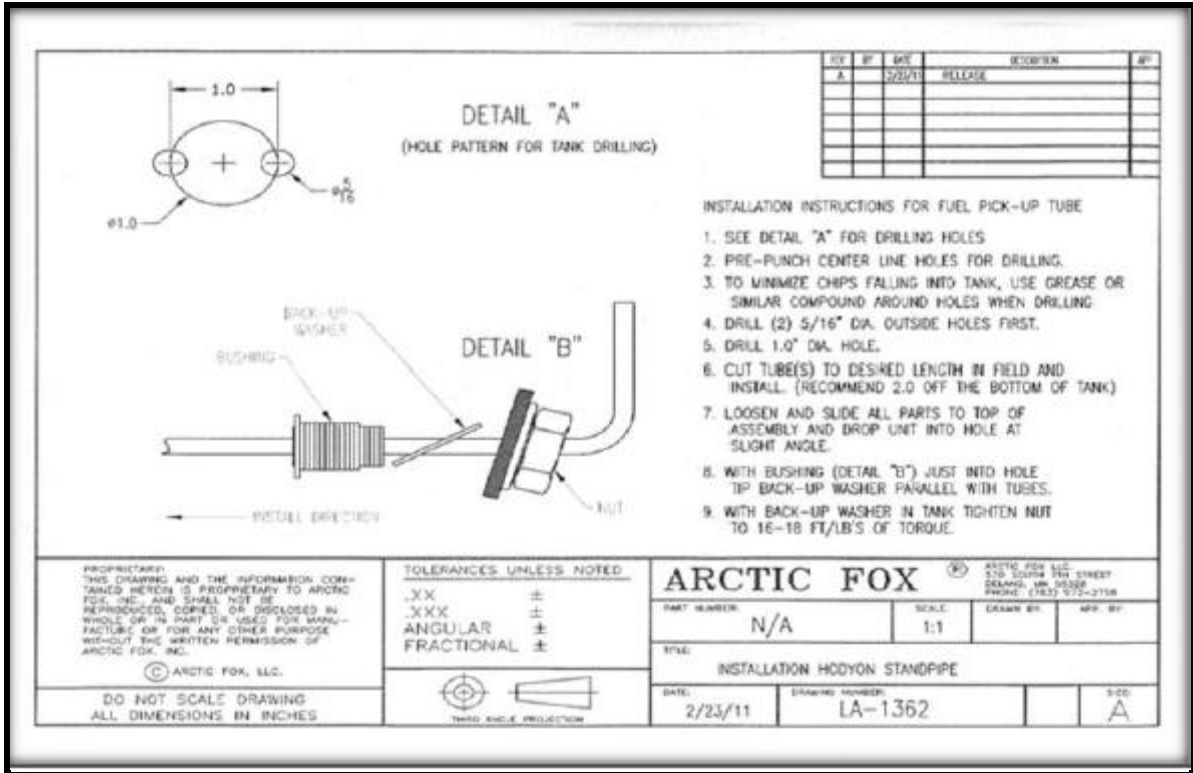


54-8432-N – APU Alternator Belt



55-8569 –Standpipe (Single)

Refer to website or Customer Service for all current part numbers, revisions, and prices.



55-8570- Standpipe (Dual)



54-8581- Intake Resonator

Refer to website or Customer Service for all current part numbers, revisions, and prices.

54-8000	Yanmar 2 TNV Engine	1
54-8001	Air Intake Hose Cable Tie	3
54-8002-N	Generator Serp Belt	1
54-8003	Exhaust Insulation (Blue Sleeve)	1
54-8004	Generator Mount Spacer	2
55-8006-A	Cover Switch (Door Safety) REV A	1
54-8008-A	24mm Radiator REV A (upsized)	1
54-8021	Air Intake 2" ID Wiring Protector (inch)	6
54-8024	Norton Sealing Tape 1/16" x 1/2"	(foot)
54-8025	Oil Drain Hose (foot)	20
54-8026-B	Muffler Assembly REV B	1.5
54-8027	Cable Loom (foot)	1
54-8028-F	Lower Panel - Aluminum	3
54-8029-E	LH Side Panel - SS	1
54-8030-G	Panel, Lower Rear - SS	1
54-8031-E	RH Side Panel - SS	1
54-8033-E	Front Engine Mount REV E	1
54-8034-G	Rear Engine Mount REV G	1
55-8036-E	Top Cover (APU Cover)- SS	1
54-8493	Access Panel (Front Door)	1
54-8039-C	Bracket, Fuel Pump	1
54-8040-A	Hose-mount (Inline- Filler neck)	1
54-8046-A	Crank Pulley, 143mm	1
54-8047-B	Generator Pulley, 107.5mm	1
54-8049-A	Radiator Angled Union	1
54-8051-M	APU Mainframe- Rev M	1
54-8052	Edge Seal (per foot)	1
54-8054	Southco Latch (Front Door)	7
54-8055-B	Gen Serp Belt Tensioner	4
54-8056	Qwik Valve T201N (oil drain) 1	1
54-8057	Wire Harness Clamp	3
54-8058	Engine Exhaust Pipe (Internal)	1
54-8059	Frame Exhaust Manifold (Flange)	1
54-8060	Motor Mount (Rubber Isolators)	4
54-8061-B	Air Cleaner Assembly REV B	1
54-8065	Gentech Sensor (O/F Tank level sensor)	1
54-8067	Speed Sensor (RPM)	1

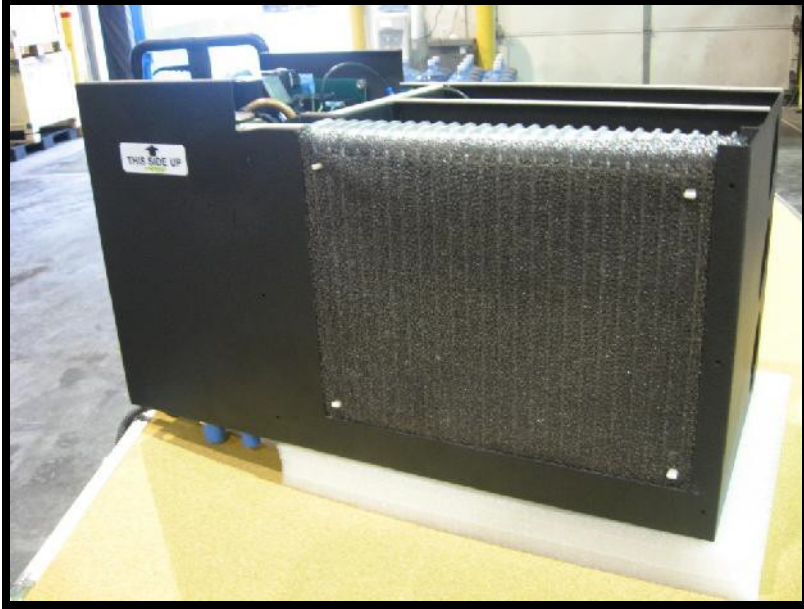
Refer to website or Customer Service for all current part numbers, revisions, and prices.

54-8084	Exhaust Clamp	1
54-8088	Fuel Hose Spring Clamp (inside of	13
54-8091-D	Bottle Assy, Radiator Overflow	1
54-8092	Fuel Hose (foot)	9.5
54-8095	Muffler hanger Bracket	1
54-8096	Muffler Hanger	1
54-8097-B	Tailpipe	1
54-8098-A	Tailpipe Hanger Bracket	1
54-8099-A	Air Intake Hose	1
54-8107	Muffler Clamp 1 1/2" w 5/16 thread	2
54-8120	Fuel Fitting (Bulkhead)	2
54-8129	Hose Drain Hose Clamp SAE #12	5
54-8130	Clamp, Worm gear, SAE 80, 3.5 x 8.5"	1
54-8131	#28 Clamp	1
54-8132	#24 Clamp	2
54-8132	#24 Clamp	2
54-8137	Fuel Hose Clamp (inside of APU)	3
54-8138	Wire Harness Clamp	1
54-8146	Air Filter Bracket	1
54-8169	Muffler Gasket (Yanmar)	2
54-8171-A	Radiator Cap (.9 bar) Stant	1
54-8172	Coolant Hose - Cap to Bottle (inch)	29
54-8176-A	Generator Clamp	1
54-8178-TFT-F	Cable Assy, Engine	1
54-8182	Radiator Fan (10" Electric) VLL	1

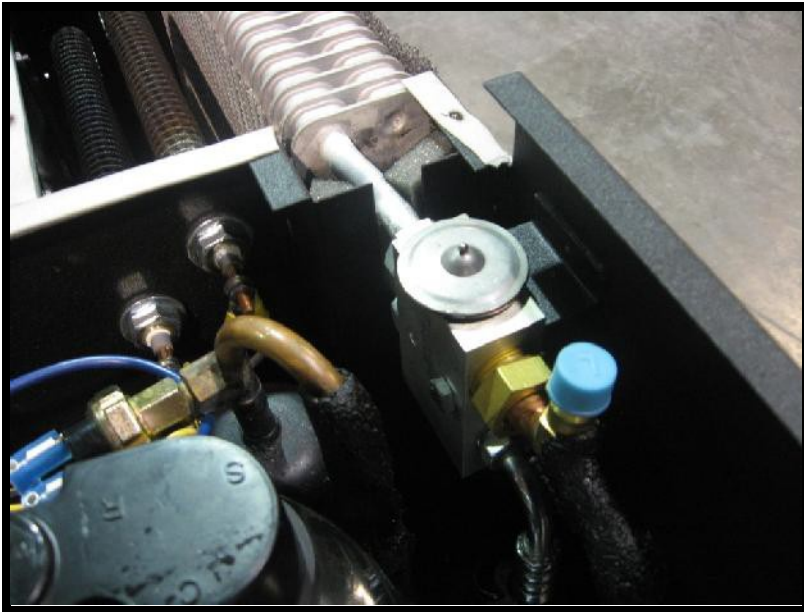
Refer to website or Customer Service for all current part numbers, revisions, and prices.

54-8183-D	Fan Shroud (10" Fan, upsize rad) plastic	1
54-8186	Cabinet Fan (12" Electric) VLL	1
54-8188	12" Fan Guard	1
54-8189	Throttle Stop	1
54-8203-F	12V Cable - 17' Positive (Red) Kit	1
54-8219-D	12V Cable - Alternator 11.75 inch (Red)	1
54-8220-D	12V Cable - Ground 15.50 inch (Black)	1
54-8267-D	Cable, APU 110VAC Pigtail	1
54-8309	5/16 Flat Washer grade 2 zinc	3
54-8311	SH22 QD bushing with a 22mm bore	1
54-8312	Flat Washer, 1/4" grade 2 zinc	7
54-8313	1/4 Nylock Nut grade 2 zinc	2
54-8317	Screw, SHCS 4-40 x 3/8"	2
54-8318	Nut, 4-40 Nylock NM Z	2
54-8326	1.716"OD x .120"T x .405"ID Washer	2
54-8327	1/4" Diameter Metal Loop Clamp	1
54-8345	Nut, KEPS 1/4-20 grade 2 zinc	1
54-8347	1/4-20 x 1.00" HHB grade 2 zinc	1
54-8352	1/4-20 x .50" HHB SS	4
54-8396	General Purpose Zip Ties 4"	5

Refer to website or Customer Service for all current part numbers, revisions, and prices.

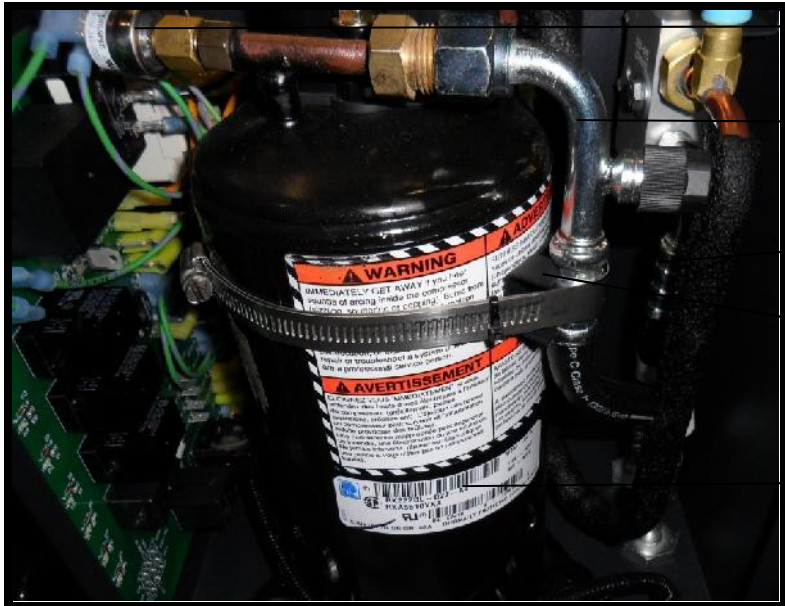


55-8914 HVAC Assembly



54-8152-E (Exp valve), 54-8158 (Evap core), 54-8196-B (LS switch)

Refer to website or Customer Service for all current part numbers, revisions, and prices.



54-8197-D

54-8116

54-8115

54-8266

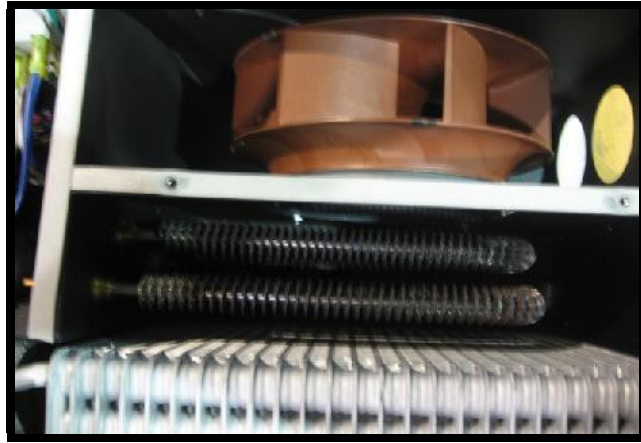
54-8150

HS Switch, #6 Liquid Hose, #8 Discharge Hose, Hose Guide, Compressor

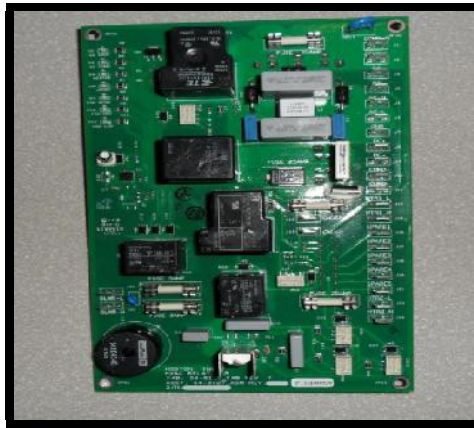


55-8413- Compressor Assembly

Refer to website or Customer Service for all current part numbers, revisions, and prices.



54-8125 (1.5Kw element), 54-8126 (1.0Kw element)



54-8127-F-R HVAC PCB Rev



55-8161 (Blower Mtr) 54-8162 (Inlet cone)



54-8161 (Unterminated)

Refer to website or Customer Service for all current part numbers, revisions, and prices.



54-8139

54-8149

54-8163

Comp Start, Comp Run, and Blower Capacitors



54-8113

54-8144-B

54-8102-A

54-8119

Condenser, Fan, Harness, Hoses, Shroud



54-8113- Cond Fan Assembly



54-8156-A - Integrated Condenser

Refer to website or Customer Service for all current part numbers, revisions, and prices.



54-8199-A- HVAC collar (3 required)



54-8242 – Round Louver w/ flange (2 supplied)



54-8243 – 45 Degree Vent (1 supplied)



Cond Mtg Hardware (supplied w/55-8911 kit)



54-8239-20 (3 inch ID ducting hose supplied w/Box 2)



54-8102-A –Cond Fan Harness in (55-8911)

Refer to website or Customer Service for all current part numbers, revisions, and prices.



54-8415-(#8 x 14foot) A/C hose



54-8416-(#6 x14foot) A/C hose

54-8112	HVAC Discharge Hose Clamp	1
54-8115	HVAC Hose #6: TXV to Bulkhead	1
54-8116	HVAC Hose #8: Discharge to Bulkhead	1
54-8125	APU HVAC 1.5kW heater element W Style	1
54-8126	APU HVAC 1kW heater element W Style	1
54-8134	Kazoo Valve	1
54-8139	Tecumseh Start Capacitor	1
54-8141	HVAC Suction Tube Cap	
54-8145	Tecumseh Comp Grommet Set	1
54-8147	HVAC Thermal Limiter Switch	1
54-8148	HVAC Potential Relay	1
54-8149	Run Capacitor	1
54-8150	Tecumseh Compressor	1
54-8152-E	Expansion Block	1
54-8158	Evaporator - APU HVAC	1
54-8161	9" HVAC Blower Fan	1
54-8163	APU Blower Capacitor	1
54-8168	HVAC Inlet Filter Screen	1
54-8196-B	HVAC Low Pressure Switch (7/16"-20)	1
54-8197-D	HVAC High Pressure Switch	1
54-8228-23	HVAC Ground Wire Assembly	1
54-8228-E	HVAC Wiring Set (22 terminated wires)	1

Refer to website or Customer Service for all current part numbers, revisions, and prices.



54-8445-R-C



54-8461-H



55-8461 (CCU/ECM)



54-8016 – RJ45 Cable



54-8205- 125amp Fuse Holder



54-8206- 125amp Fuse



55-8506 (relay- all circuits)

Refer to website or Customer Service for all current part numbers, revisions, and prices.



54-8457 Coolant Temp Sensor



54-8171A Radiator Cap



54-8440 – Water Pump



54-8441 – Water Pump Gasket



55-719415-92670 (Head Gasket Set)



54-121252-39450 –Oil Pressure Switch



54-8202E- grd Cable (Box 1)



54-8204 E - Fuse Block to Battery Cable

Refer to website or Customer Service for all current part numbers, revisions, and prices.

Optional kits, Service kits, Tools, Reference materials



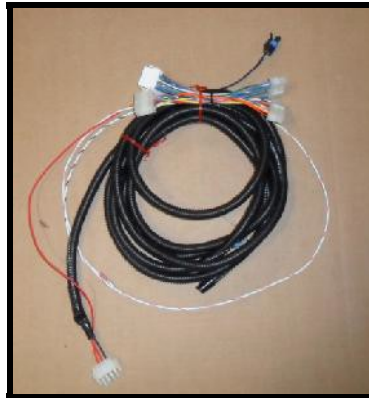
54-8502 (Head Temp Sensor- TSB)



55-8502 (Shipping pack)



55-8419 (Water Separator Bowl)



54-8459 C (PB / TFT CCU adapter)



55-8580 used w/ 8581

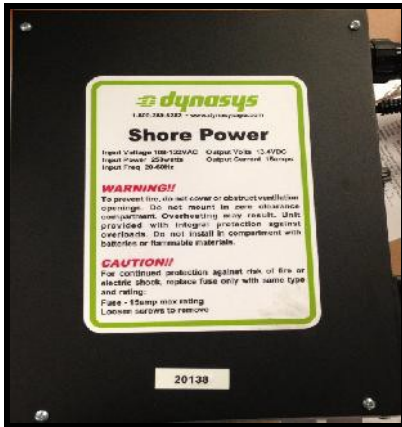


54-8436 – Block Htr Receptacle



55-8581 – Tower Vent

Refer to website or Customer Service for all current part numbers, revisions, and prices.



54-8919-C - Integral Shore Power



54-8500 – Transfer Switch



54-8247 (Holder), 54-8248 (Fuse) –Shore Power



54-8249 – SP grd Cable



54-8250 w/8247 &8248 – SP pos Cable



54-8495 – SP Receptacle

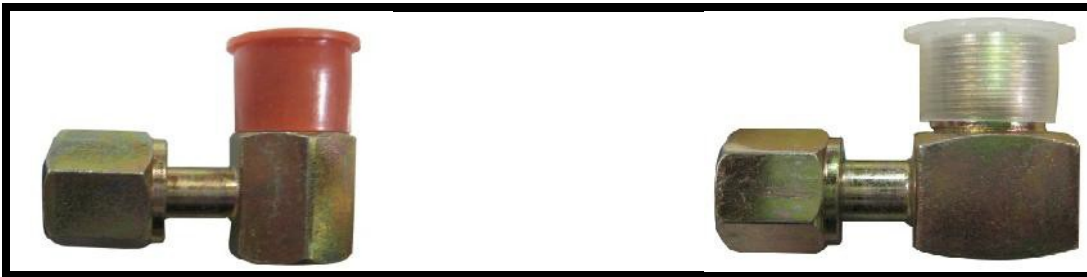
Refer to website or Customer Service for all current part numbers, revisions, and prices.



55-1002 PoP Nut Insert tool



55-1010 Generator Belt Alignment tool



54-8433- #6 HVAC Adapter

54-8434- #8 HVAC Adapter

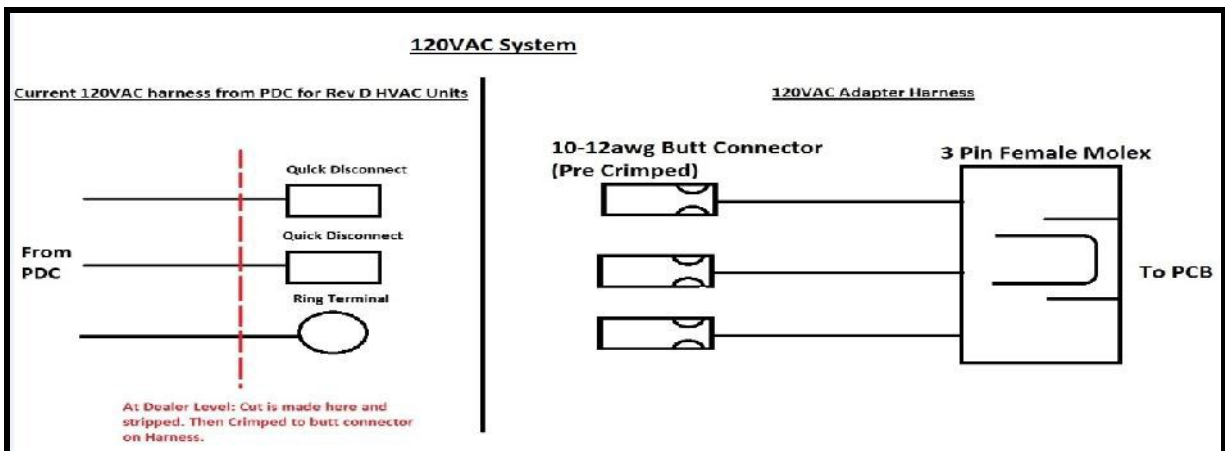
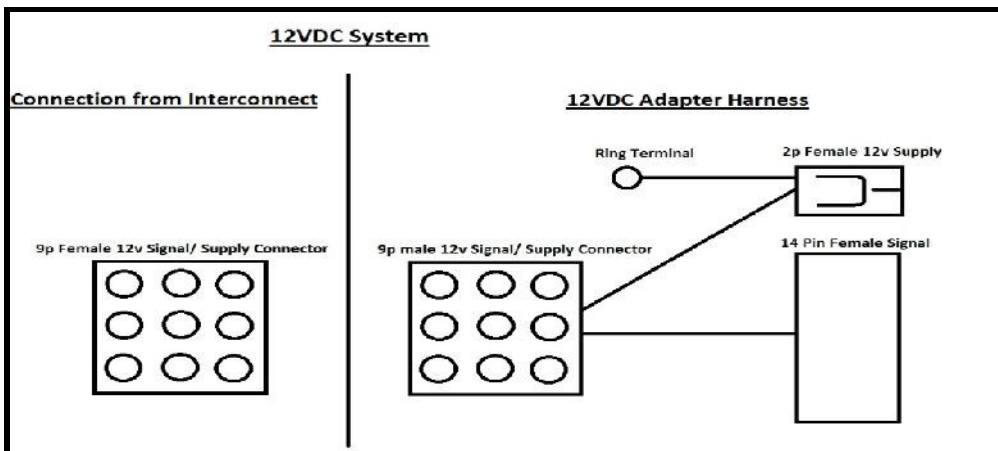
In Process Visual Verification of Fuel System Electrical Connectors

Fuel Solenoid	Block Temp Switch Jumper	Fuel Pump
<p>C: White B: Black A: Red</p>	<p>C: Green B: Black/ Green A: Black</p>	<p>B: Black A: Red</p>

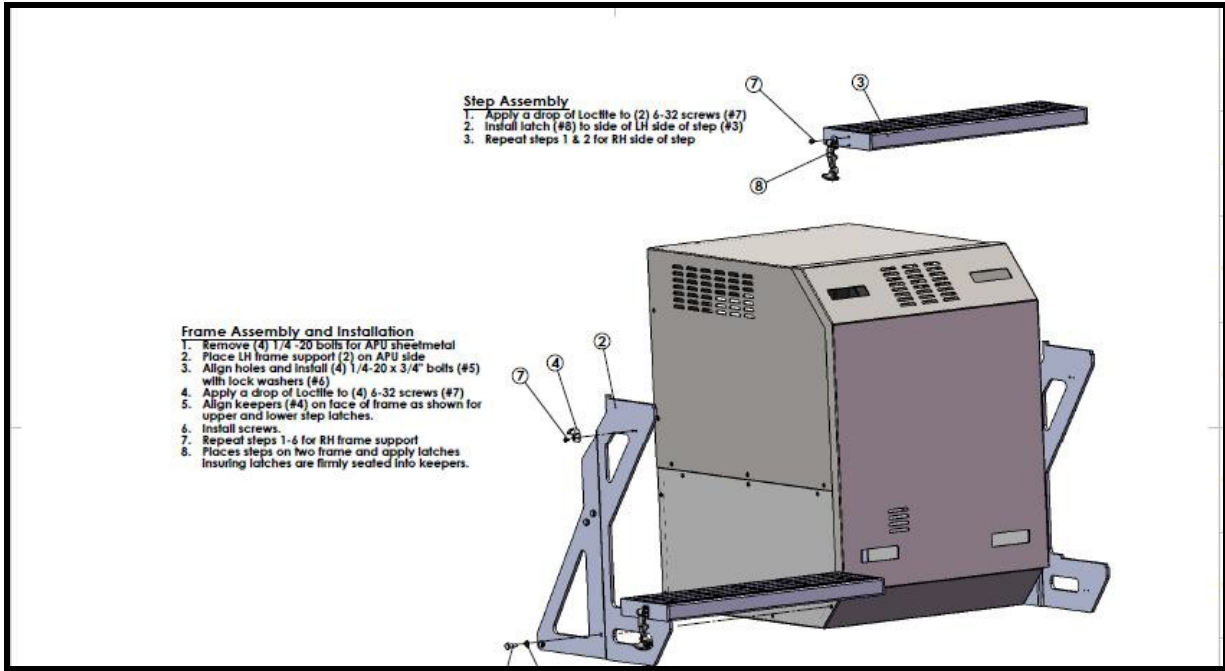
Refer to website or Customer Service for all current part numbers, revisions, and prices.



55-8916 – HVAC 12Vdc/ 110 Adapter Harness



Refer to website or Customer Service for all current part numbers, revisions, and prices.

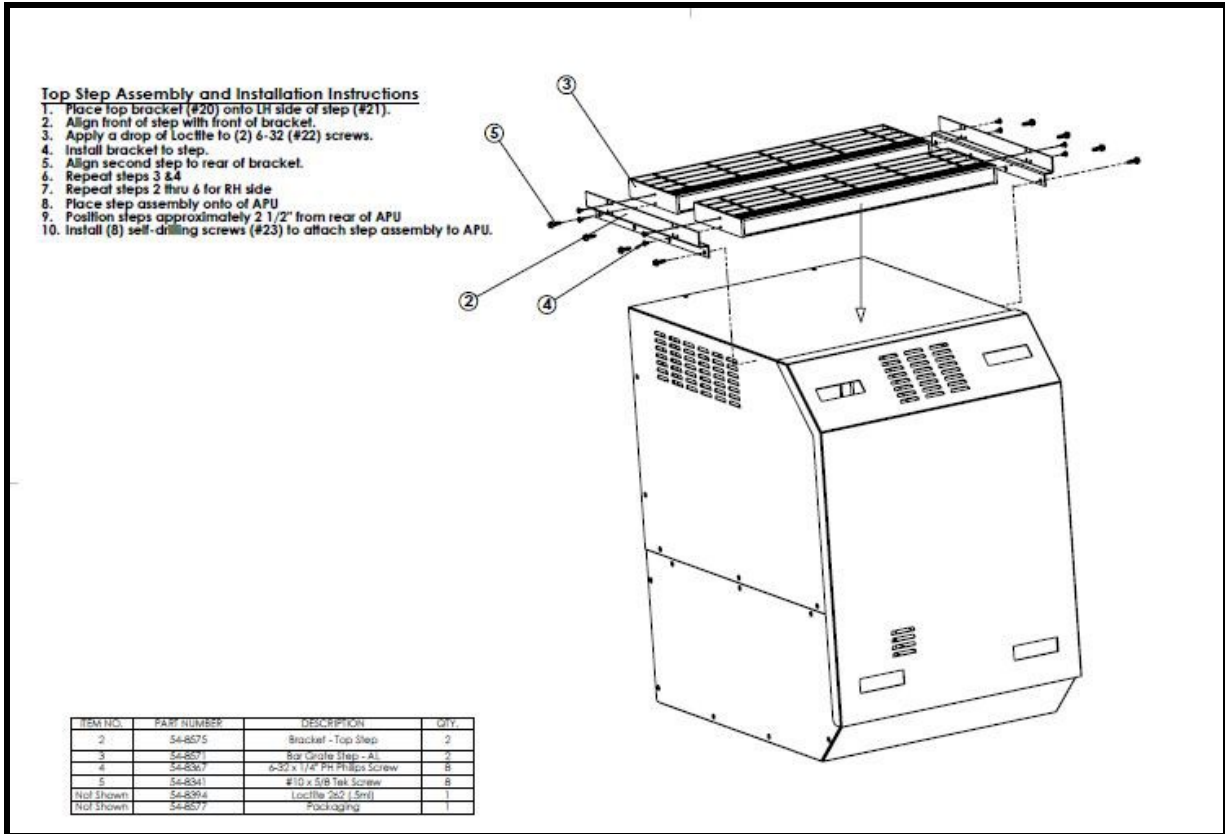


ITEM NO.	PART NUMBER	DESCRIPTION	QTY.
1	54-8922	ASSEMBLY INSTRUCTIONS	1
2	54-8573	Bracket- Step LH	1
3	54-8571	Bar Grate- Step - AL	2
4	-	LATCH KEEPER	4
5	54-8343	.250-20 x .75 Hex Bolt	8
6	54-8322	1/4 SS Lock Washer	8
7	54-8327	6-32 x 1/4" PH Philips Screw	16
8	54-8574	Latch	4
9	54-8572	Bracket- Step RH	1
10	54-8576	PACKAGING	1
11	54-8394	LOCTITE 262 (.5ML)	1

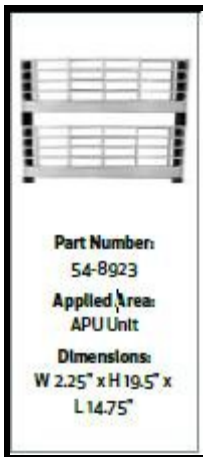
55-8922 –Front Step Kit



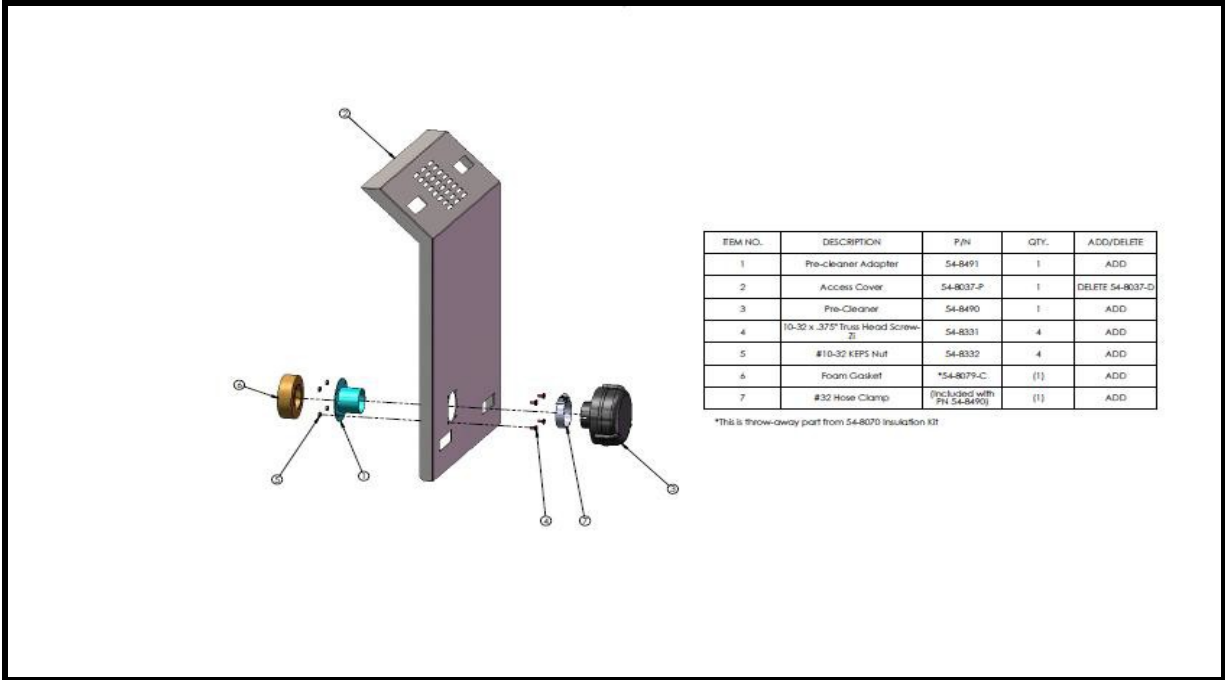
Refer to website or Customer Service for all current part numbers, revisions, and prices.



55-8923 –Top Step Kit



Refer to website or Customer Service for all current part numbers, revisions, and prices.



EBM NO.	DESCRIPTION	P/N	QTY.	ADD/DELETE
1	Pre-cleaner Adapter	54-8491	1	ADD
2	Access Cover	54-8037-P	1	DELETE 54-8037-D
3	Pre-Cleaner	54-8490	1	ADD
4	10-32 x .375" Truss Head Screw- B	54-8331	4	ADD
5	#10-32 KEPS Nut	54-8332	4	ADD
6	Foam Gasket	*54-8079-C	(1)	ADD
7	#32 Hose Clamp	(Included with PN 54-8490)	(1)	ADD

*This is throw-away part from 54-8070 Insulation Kit

55-8930 – Pre-Cleaner Option

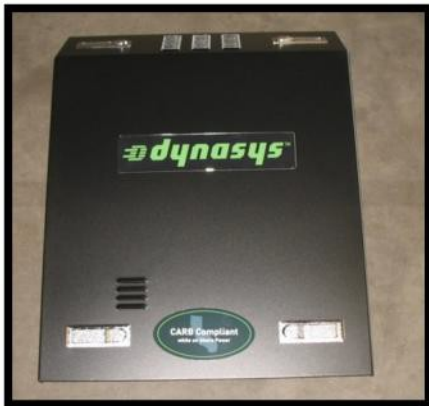
Refer to website or Customer Service for all current part numbers, revisions, and prices.



Top Cover Kit 55-8036-E

Contains:

- 1x Top Cover Panel
- 1x "Not a Step" Label
- 1x Norton Sealing Tape
- 1x Edge Seal
- 4x Insulation Pieces



Front Cover Kit 55-8493

Contains:

- 1x Access Panel
- 4x Latches
- 1x "Dynasys" Label
- 1x "Carb Compliance" Label
- 2x Insulation Pieces

Refer to website or Customer Service for all current part numbers, revisions, and prices.



Left Side Panel Kit 55-8029-E

Contains:

- 1x LeftSide Panel
- 1x Insulation Piece
- 1x Norton Sealing Tape



Right Side Panel Kit 55-8031-E

Contains:

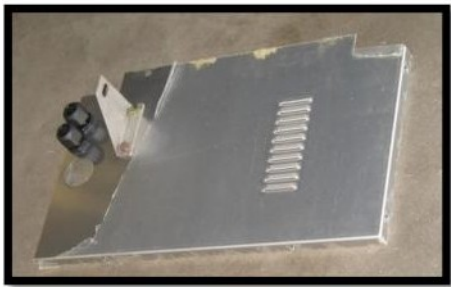
- 1x Right Side Panel
- 1x Tailpipe Hanger Assy
- 1x Insulation Piece
- 1x NortonSealing Tape



Lower Pan Kit 54-8028-F

Contains:

- 1x Lower Pan Panel
- 1x C3biret Fan
- 1x C3biretFan Guard
- 1x Insulation Piece
- 1x NortonSealingTape
- 1x EdgeSeal



Lower Back Panel Kit 55-8030-G

Contains:

- 1x Lower Back Panel
- 1x MufflerHanger Bracket Assy
- 2x FueiFittings
- 2x Cord Grips
- 1x GeneratorPigtail Connection Kit

Refer to website or Customer Service for all current part numbers, revisions, and prices.

