



Dynasys Parts Manual Gen 2 Series

Always verify with Customer Service part revision level

Dynasys Gen 2 Parts Manual Rev B
Page 1 of 36
Released 10/27/14

Table of Contents

KEY

Engine Cabinet

HVAC Assembly

120 VAC

Controls

Metals/Hardware

Always verify with Customer Service part revision level

APU MAIN UNIT ITEMIZED COMPONENTS

54-8001	Cable Tie, Nylon Std. 14.5"	5
54-8003	Exhaust Insulation (44mm ID x 18.75")	1
54-8004	Generator Mount Spacer	2
55-8006-A	Cover Switch (CPI) - 6" lead w/ Delphi con. REV A	1
54-8026-B	Muffler 4 x 18 Quiet Version REV B	1
55-8029-E	LH Side Panel (Markon Design)	1
55-8031-E	RH Side Panel	1
55-8036-E	Top Cover	1
54-8040-A	Hose-	1
54-8047-B	Generator Pulley, 107.5mm	1
54-8052-E	Edge Seal (per foot)	7
54-8054	Compression Latch	4
54-8055-A	Tensioner	1
54-8058	Engine Exhaust Manifold	1
54-8059	Exhaust Intermediate Pipe	1
54-8060	Engine Isolator	4
54-8061-B	Air Cleaner	1
55-8065	Bottle Coolant Level Sensor - 110c	1
54-8067	Speed Sensor	1
54-8084	Exhaust Clamp	1
54-8088	Fuel Hose Spring Clamp	7
54-8091-D	Coolant Bottle Assy, Radiator Overflow	1
54-8092	Fuel Hose (foot)	9
54-8095	Muffler hanger Bracket	1
54-8096	Muffler Hanger	1
54-8097-B	Tailpipe	1
54-8098-A	Tailpipe Hanger Bracket	1
54-8107	Muffler Clamp 1 1/2" w 5/16 thread	2

Always verify with Customer Service part revision level

54-8169	Muffler Gasket (Yanmar)	1
54-8171-A	Radiator Cap (.9 bar) Stant	1
54-8172	Coolant Recovery Hose - Cap to Bottle (inch)	29
54-8179	110VAC Electric Cord Grip	2
54-8182	Radiator Fan (10" Electric) VLL	1
54-8183-D	Fan Shroud (10" Fan, upsize rad) plastic	1
54-8203-F	12V Cable - 17' Positive (Red) Kit	1
54-8219-D	12V Cable - Alternator 11.75 inch (Red)	1
54-8267-D	Cable, APU 110VAC Pigtail	1

Always verify with Customer Service part revision level

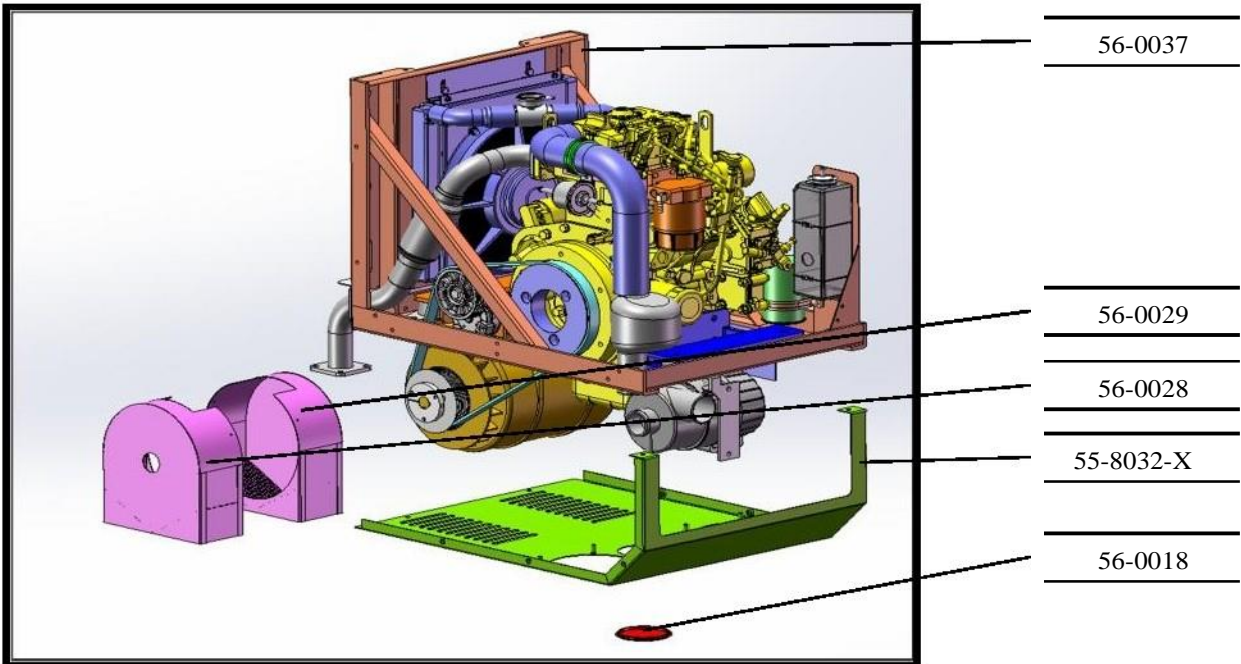
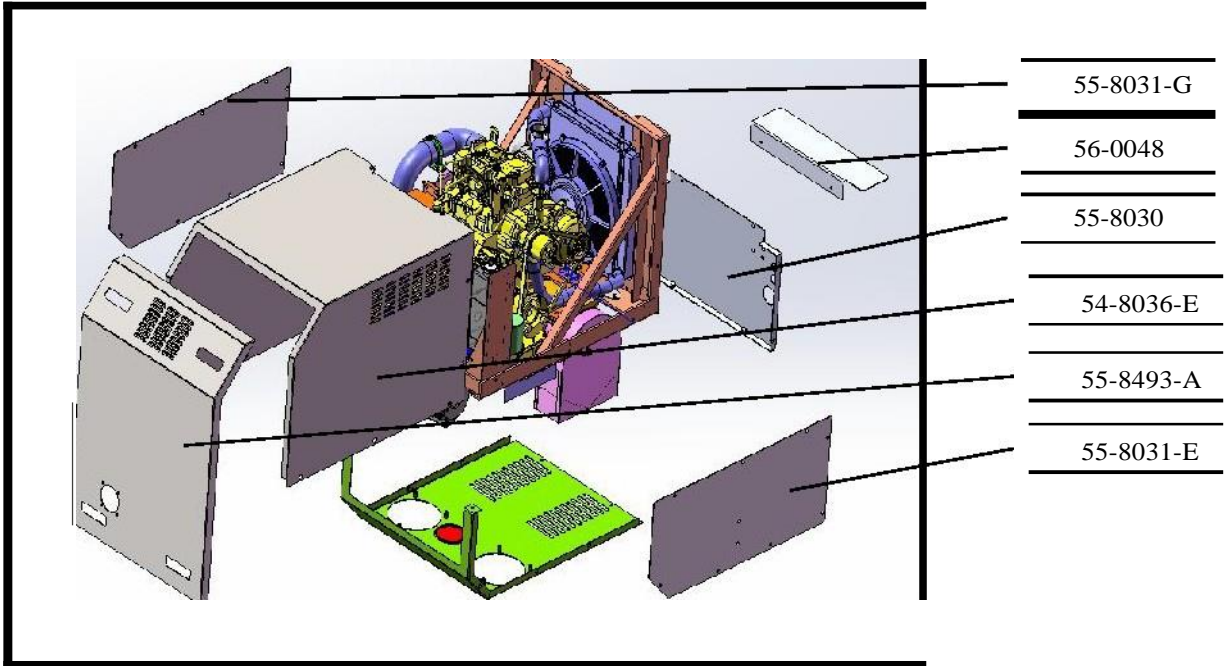
54-8457	Coolant Temp Sensor (TFT CCU ECM)	1
54-8475-A	Radiator Bracket - Frame REV A	1
54-8483	3/4" Radiator Hose Clamps	3
54-8555	Radiator (Upsize) Grommet	4
54-8558	Radiator (Upsize) Upper Mount Bracket	1
54-8581	Intake Resonator	1
56-0001	Radiat	1
56-0002	Rear Engine bracket	1
56-0003	Front Engine bracket	1
56-0004	Tensioner Mount Stabilizer Strap	1
56-0005	Crank Pulley, 143mm	1
56-0006	Lower Coolant Hose	1
56-0007	Upper Coolant Hose #1 (Engine)	1
56-0008	Upper Coolant Hose #2 (Radiator)	1
56-0009	Air Intake Flex hose (Molded)	1
56-0010	Speed Sensor Bracket	1
56-0011	Air Intake Clamp	1
56-0012	Fuel Filter / H2O Separator	1
56-0013	Bracket, Fuel Pump	1
56-0014	Pump Bracket Support	1
56-0015	Generator Serpentine Belt	1
56-9017	McMillan 4.5kw generator w- capacitor	1

Always verify with Customer Service part revision level

56-0020	Engine	1
56-0024	Block Temp. Switch/Jumper Assembly	1
56-0027	lower fan pigtail	1
56-0029	Exhaust plenum	1
56-0035	engine harness support	1
56-0036	Lower Pan (bottom pan)	1
56-0037	APU Mainframe	1
56-0038	Serial Tag	1
56-0040	lower	2
56-0043	return line worm gear clamp (PMI	1
56-0044	Lower Back Panel	1
55-8493-	Front Cover Assembly	1
56-0047	Front Cover Vent	1
56-0048	Heat Shield	1
54-8405	Air Filter	1
56-0050	Caterpillar c0.5 Engine	1
56-0072	lower fan spal VA32-A101-62S	2

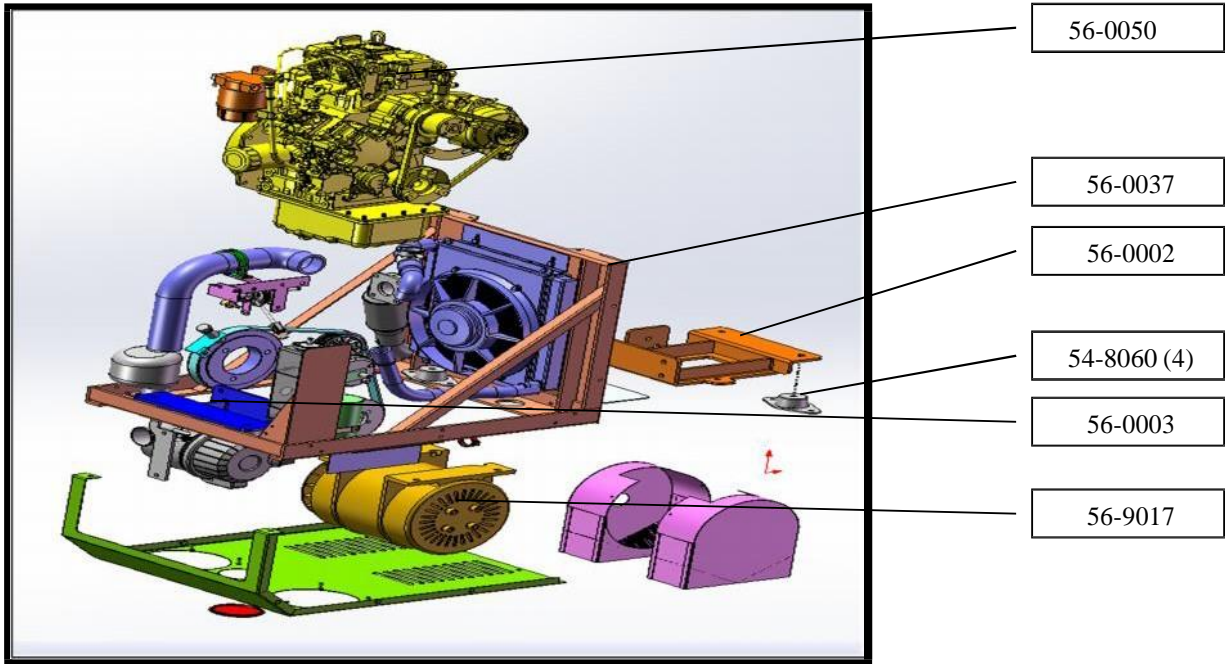
Always verify with Customer Service part revision level

Engine Cabinet panels / Sheet metal

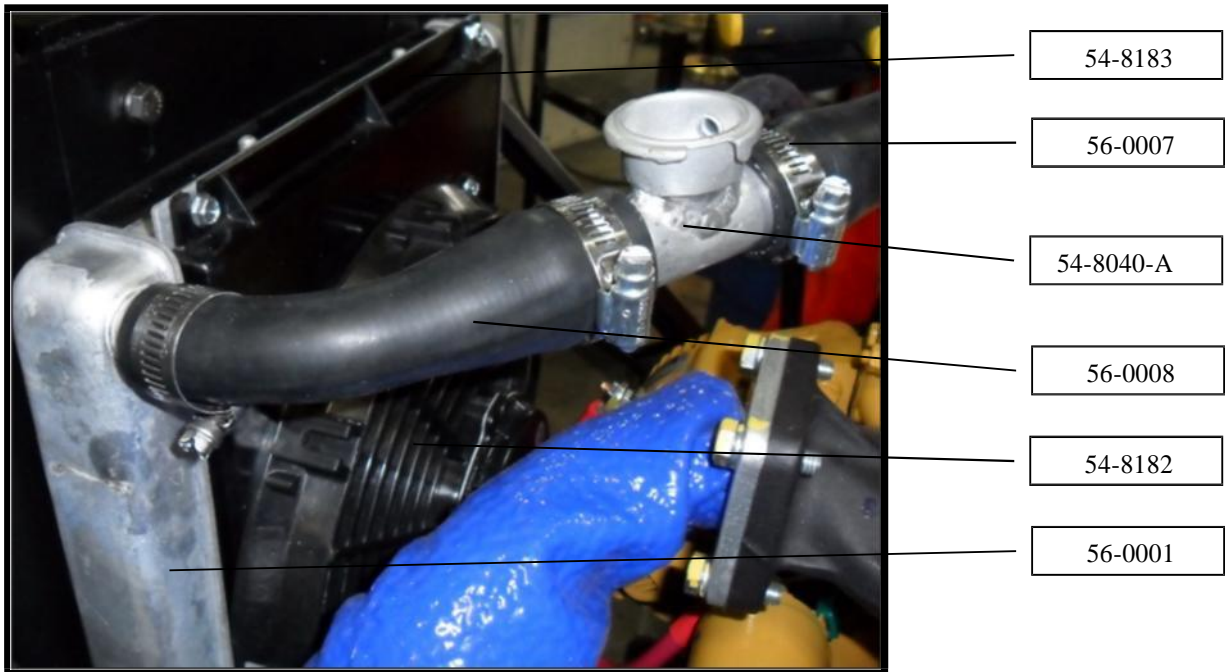


Always verify with Customer Service part revision level

Main Engine Components and Mounting



Cooling System Components



Radiator, Shroud, Fan, Hoses, Filler neck

Always verify with Customer Service part revision level



56-0001

56-0006

Radiator, Lower Hose



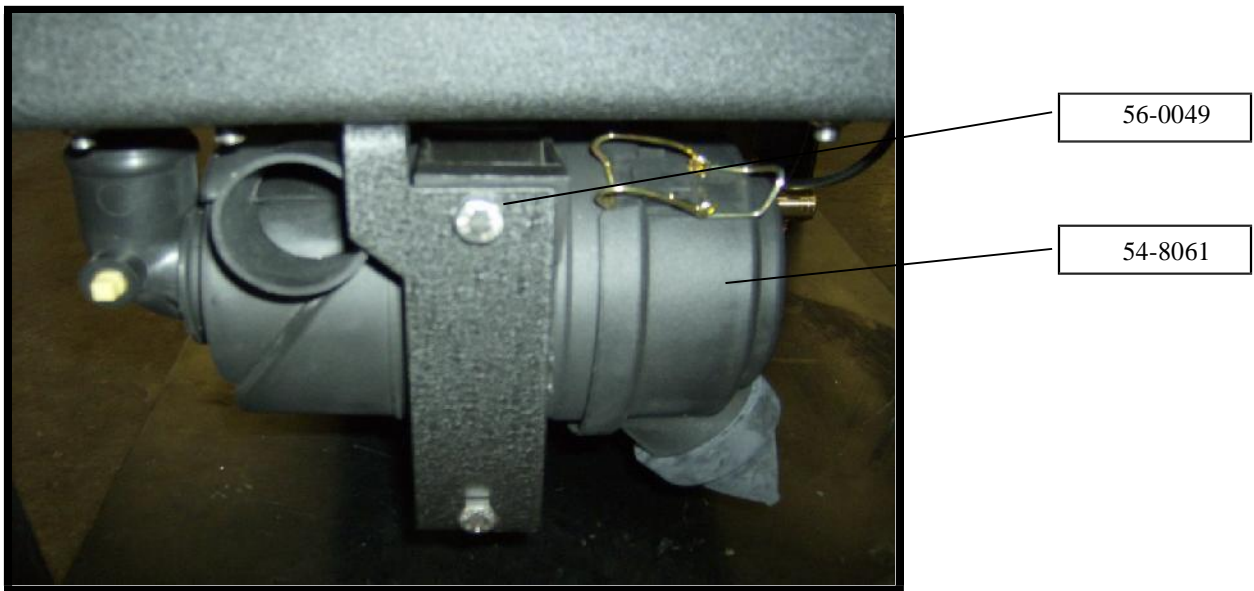
54-8091-D

55-8065

Coolant Recovery Bottle, Coolant Level sensor

Always verify with Customer Service part revision level

Air Cleaner Assembly and Mounting



Air Cleaner Assembly, Bracket

Always verify with Customer Service part revision level

Engine Cabinet Fuel / Air Delivery System



56-0012

54-8092

54-8006A

Fuel Filter / Water Separator Assembly, Safety Switch



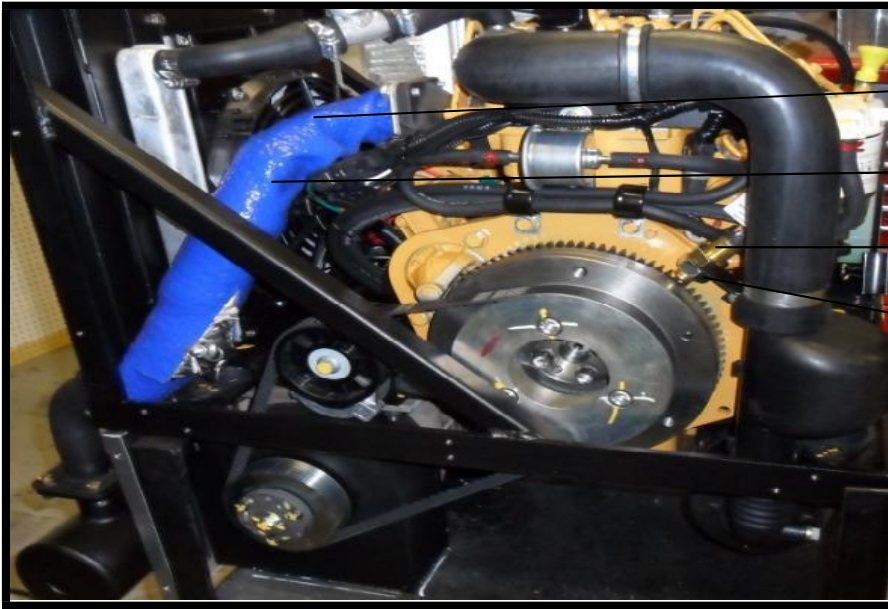
55-8409

56-0009

54-8581

Fuel Pump, Hose, Intake hose, Resonator Assembly

Always verify with Customer Service part revision level



54-8003

54-8058

54-8067

56-0010

Internal Exh pipe, Heat sleeve, RPM Sensor, RPM Mag pickup

Engine Cabinet rear components



54-8059

56-0044

54-8120 (2)

54-8096

54-8169

54-8026

Intermediate pipe, hanger, muffler, panel, fuel ports

Always verify with Customer Service part revision level

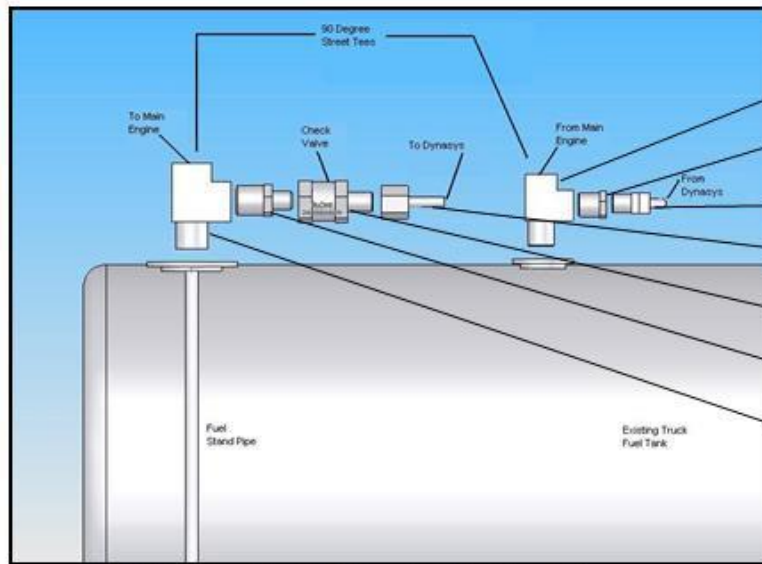


54-8098

54-8097

Tailpipe, Tailpipe Bracket

Fuel Delivery Options



54-8233

54-8235

54-8237

54-8238

54-8241

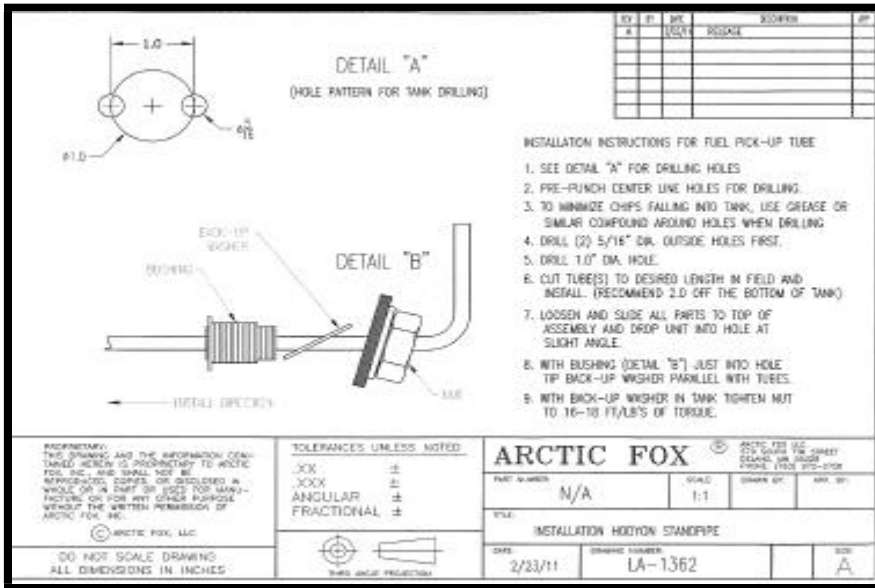
54-8236

54-8234

APU System Fuel Fitting Installation Kit

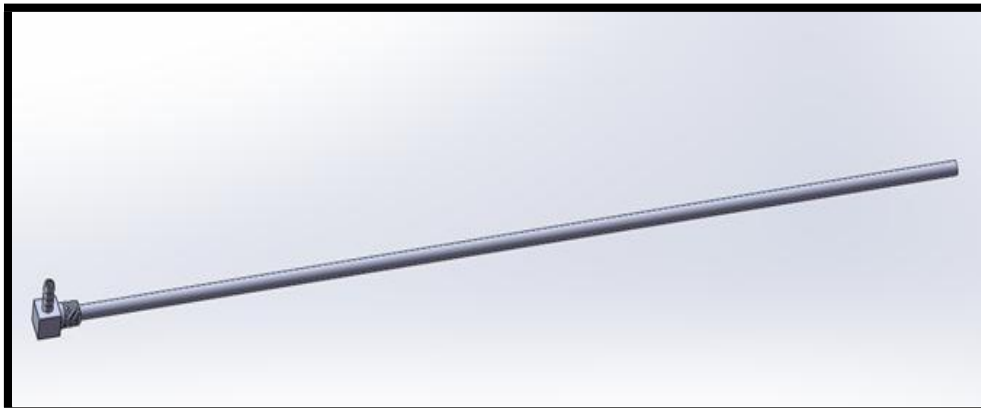
56-9003

Always verify with Customer Service part revision level



54-8570

Dual Fuel Line Standpipe

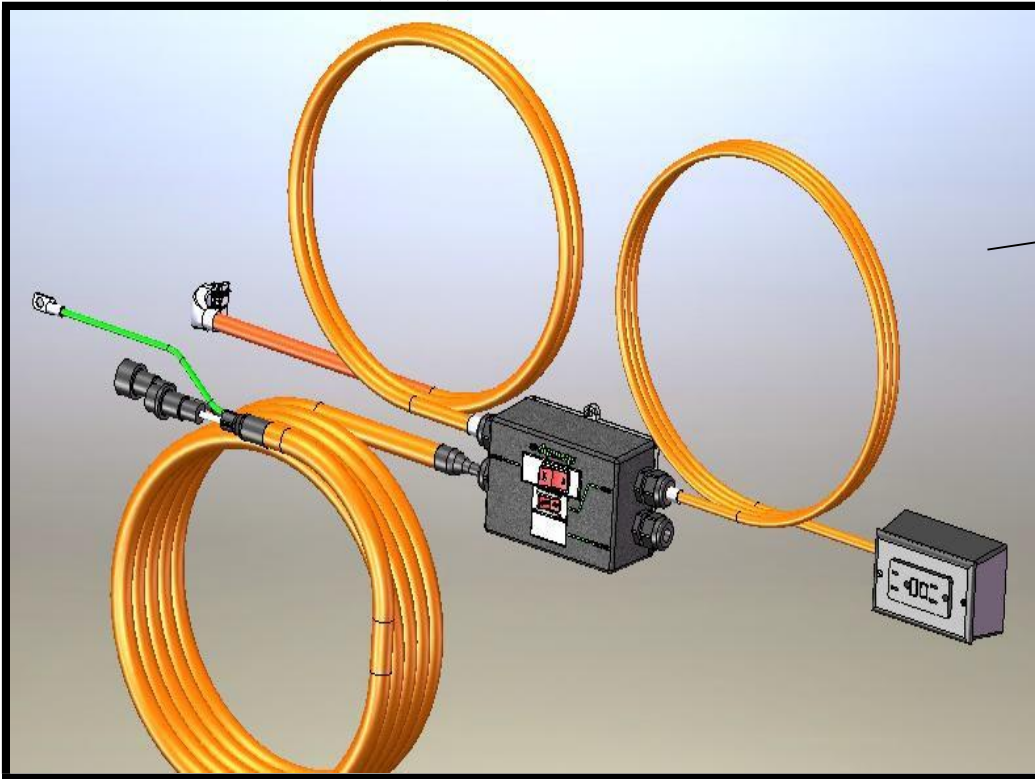


55-8569

Single Fuel Line Standpipe

Always verify with Customer Service part revision level

Power Distribution Center (PDC)



56-0045

APU Power Distribution Center (PDC)

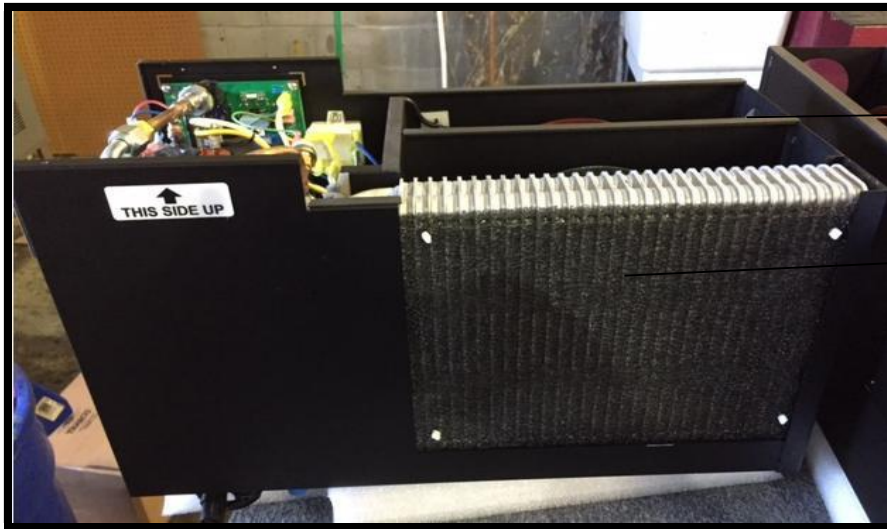
Always verify with Customer Service part revision level

HVAC UNIT ITEMIZED COMPONENTS 56-2000 BOM

54-8112	HVAC Discharge Hose Clamp	1
54-8115	HVAC Hose #6: TXV to Bulkhead	1
54-8116	HVAC Hose #8: Discharge to Bulkhead	1
54-8125	APU HVAC 1.5kW heater element W Style	1
54-8148	HVAC Potential Relay	1
54-8149	Run Capacitor	1
54-8150	Tecumseh Compressor	1
54-8152-E	Expansion Block	1
54-8158	Evaporator - APU HVAC	1
54-8161	9" HVAC Blower Fan	1
54-8163	APU Blower Capacitor	1
54-8168	HVAC Inlet Filter Screen	1
54-8196-B	HVAC Low Pressure Switch (7/16"-20)	1
54-8197-D	HVAC High Pressure Switch	1

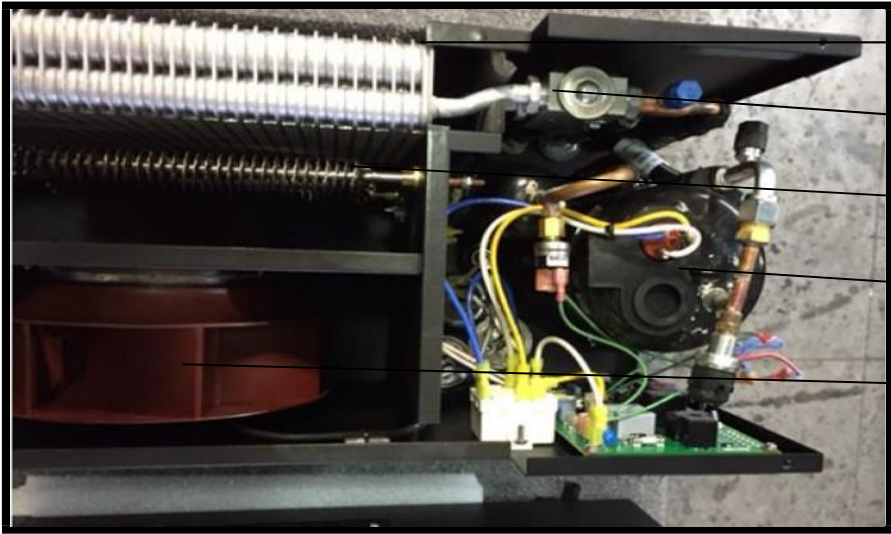
Always verify with Customer Service part revision level

HVAC UNIT



Main assembly, Inlet Filter Screen, Screen Retainer Pins

Always verify with Customer Service part revision level



- 54-8158
- 54-8152
- 54-8125
- 55-8413
- 54-8161

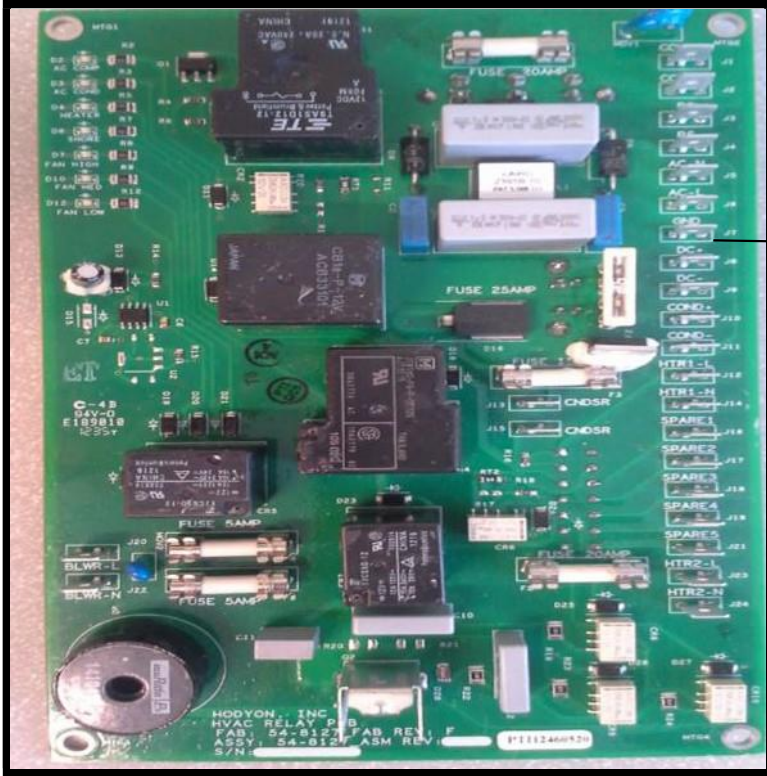
Evap Core, Exp Block, Heater Element, Compressor, Blower Motor



- 55-8197-D
- 54-8127-F-R
- 54-8116

High Side Switch, #8 Discharge Hose, PCB Assembly

Always verify with Customer Service part revision level



54-8127-F-R

HVAC PCB -Rev F



54-8149

54-8139

54-8163

Compressor Start, Run Capacitor, Blower Motor Capacitor

Always verify with Customer Service part revision level

**CONDENSER ASSEMBLY
54-8911 BOM**

54-8102-B	HVAC Cable to Condenser Box REV B	1
54-8113	Condenser Fan (14" Electric)	1
54-8117	HVAC Hose #8: Discharge to Condenser	1
54-8119	HVAC Hose #6: Drier to HVAC	1
54-8144-E	Condenser Shroud (integrated drier) REV E	1
54-8156-A	Condenser w/ Drier attached REV A	1

Always verify with Customer Service part revision level

Integrated Condenser Assembly



54-8113

54-8117

54-8144-D

54-8102-B

54-8119

Integrated Condenser, Fan, Harness, Hoses, Shroud



54-8156-A

Rear View of Integrated Condenser

Always verify with Customer Service part revision level

**STANDARD INSTALLATION KIT
56—6000 BOM**

54-8239-20	Duct Hose 3" ID (20 foot section)	1
54-8242	Duct Vent Louver Assembly	2
54-8243	45 degree Upturn Vent 3"	1
54-8244	Air Return Vent	1
54-8245	Evaporator Drain Tube (foot)	1
54-8173	Cable ECM-HVAC 12VDC	1
54-8202-F	12V Cable - 17 ft Negative (Black) Kit 2AWG	1
54-8205	High Amp AMG Fuse Holder, 125A with Cover	1
54-8206	High Amp AMG Fuse, 125A 32V	1
54-8177- TFT-	Cable Assy, External Interconnect	1
54-8204-F	12V Cable - 2' Positive (Red) Kit	1
54-8291-B	Dynasys Install Checklist	1
54-8461-H	TFT ECM Firmware v5.0	1
54-8101-G	Assembly, Power Distribution Center	1

Always verify with Customer Service part revision level



54-8205

125amp Fuse Holder



54-8206

125amp Fuse

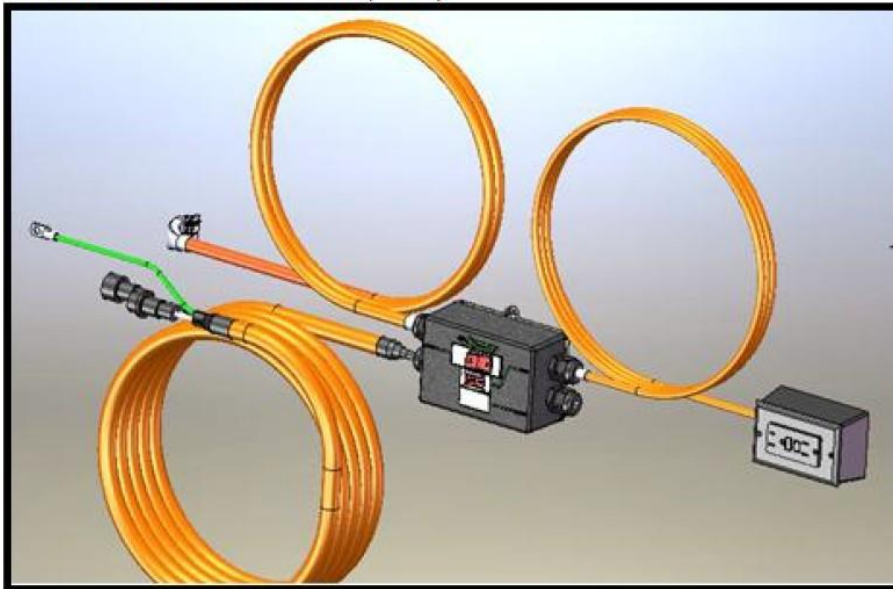


54-8204

Battery to Fuse Block 12VDC Cable

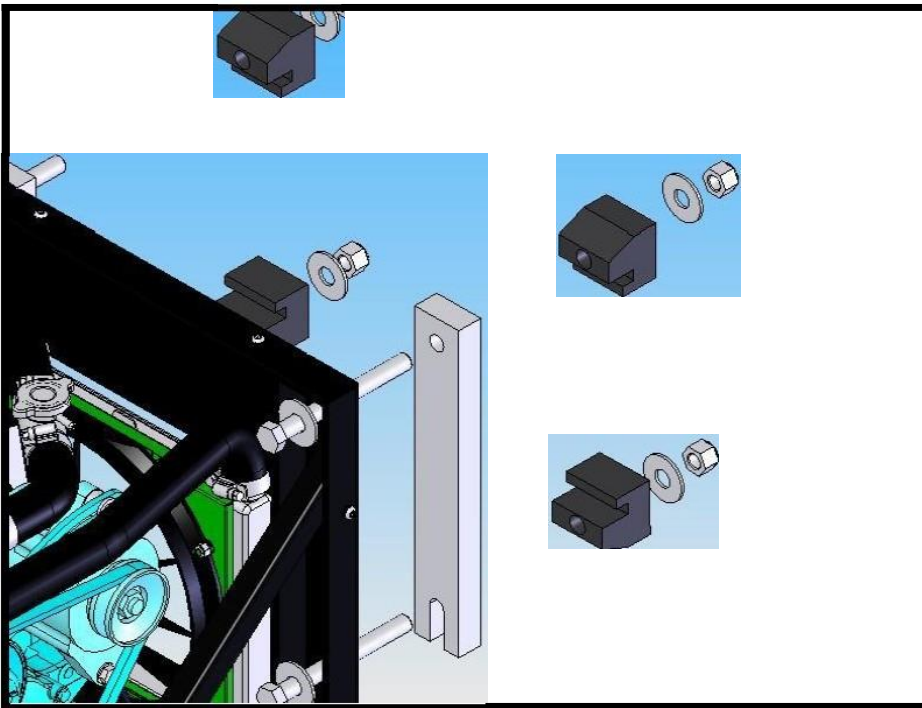
Always verify with Customer Service part revision level

Power Distribution Center (PDC)



56-0045

APU Power Distribution Center (PDC)



Standard mounting kit without spacer bars

Always verify with Customer SeiVice part revision level

**ELECTRONIC COMPONENTS
56-4000 BOM**

54-8016	CCU to ECM Cable (Cat5 Shielded 8 ft)	1
54-8066-C	ECM Enclosure Cover REV C	1
54-8069	ECM Enclosure	1
54-8445-R-C	CCU Assembly V6.0	1
56-0045	110VAC Distribution Unit	1
54-8420-C	Breaker Box - Larger	1
54-8461-H	ECM	1
54-8177-TFT-E	Interconnect Harness CCU	1
54-8358	CCU PCB Screw - #4 x 3/8" pan head phillips	4
54-8450	CCU Case Front	1
54-8451-A	CCU Display Bezel	1
54-8452	CCU Case Screw (#4 x 3/4" Plastite Pan Phillips)	4
54-8453-A	CCU Case Back	1
54-8454	CCU Case Mount Bracket	1



54-8445-R-C

CCU Assembly

Always verify with Customer Service part revision level



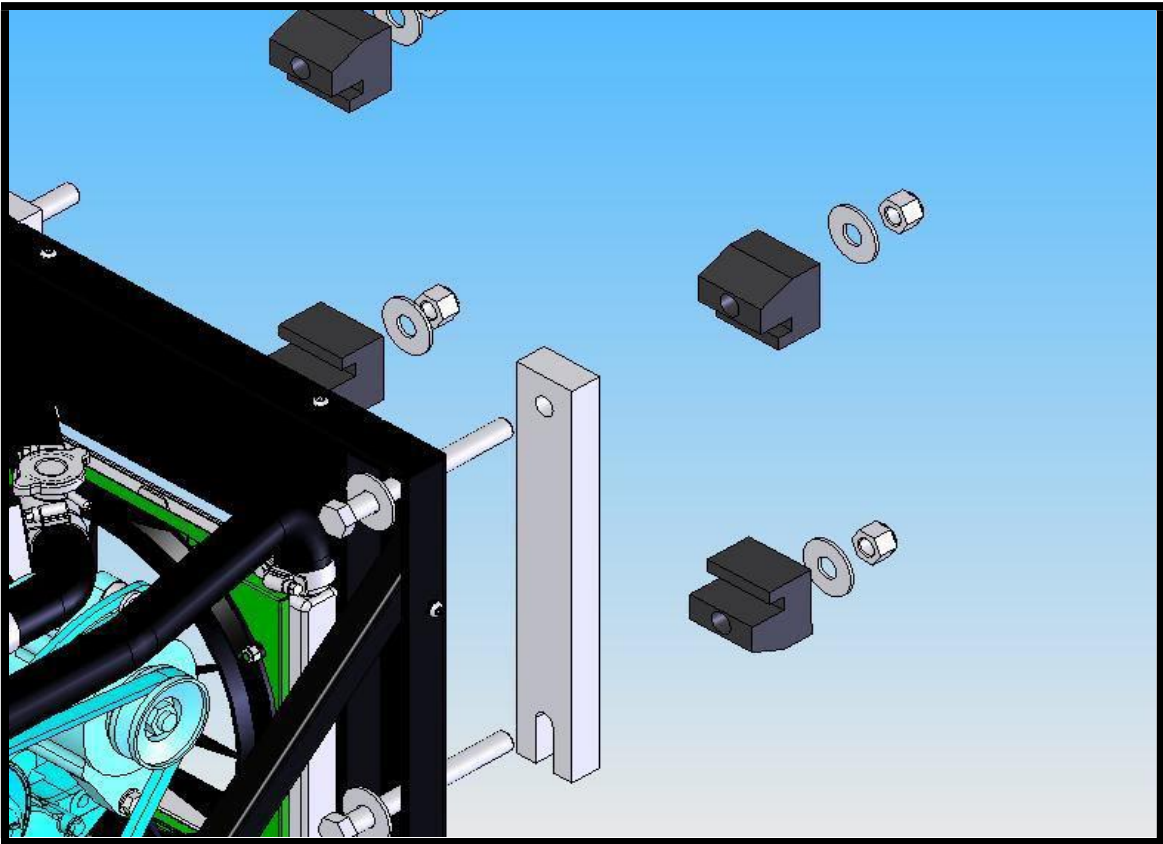
54-8461-H

ECM Assembly

Always verify with Customer Service part revision level

Optional APU Cabinet Install Kit

	Description (Direct and Spaced APU Mounting) 55-8917	QTY
8200	Frame Spacer	2
8215	5/8-11 x 6 1/2 HHB GR 8 Zinc Yellow	4
8216	5/8-11 x 1 1/2 HHB GR 8 Zinc Yellow	4
8217	5/8-11 nylon lock nut GR 8 Zinc Yellow	4
8218	5/8-11 Fw GR 8 Zinc Yellow	8



APU Mounting Spacer Kit (55-8917)

Always verify with Customer Service part revision level

SHORE POWER 54-8919

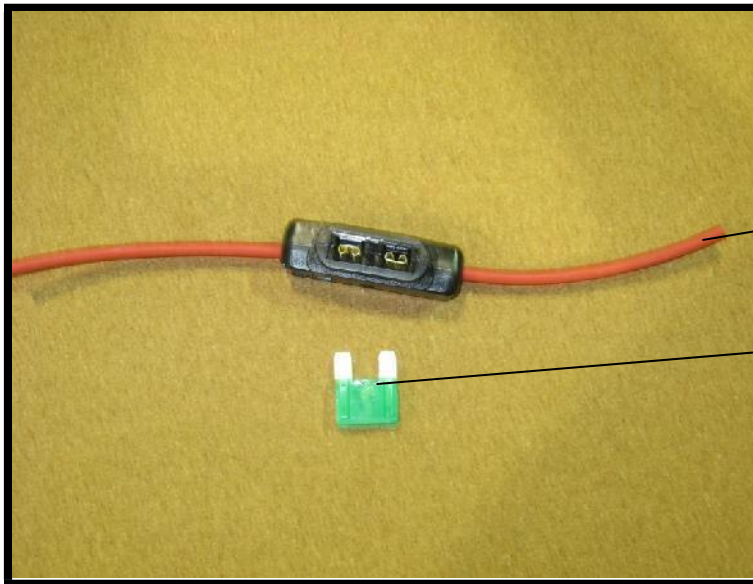
54-8027	Cable Loom (foot)	69"
54-8179	110VAC Electric Cord Grip Black	2
54-8207	3/8" Shrink Tube (inches) Panduit	1.5"
54-8226	#10 ring terminal 12-10G	3
54-8227	Panduit #10 ring terminal 16-14G	3
54-8259	Molex Terminal	2
54-8260	Molex Housing	1
54-8332	10-32 KEPS nut	2
54-8359	8-32 KEPS nut zinc	2
54-8360	#6x.25" pan head phillip Type25 self tap screw zinc	4
54-8396	General Purpose Zip Ties 4"	1
54-8398	General Purpose Zip Ties 7.5"/191mm	3
54-8400	Wire - 12G Yellow MTW UL1015 (inch)	3.5"
54-8401	Wire - 12G White MTW UL1015 (inch)	3.5"
54-8438	Ring Terminal, 18 awg Red	2
54-8469	Insert Grommet - Heyco 1120	1
54-8504	15A IOTA Battery Charger (Shore Power)	1
54-8505-A	Battery Charger Case - Bottom	1
54-8506-A	Battery Charger Case - Top	1
54-8507	Battery Charger Case - Divider	1
54-8508	Heyco Battery Case Plug #2497	1
54-8509	Tyco 30 amp Transfer Switch	1
54-8511	Dynasys Shore Power Label	1
54-8513	18 AWG wire, black	144"
54-8514	12-3AWG, Orange, transfer swi to HVAC Cable (foot)	10'
54-8514-A	HVAC Cable	1
54-8519-A	Shore Power Pigtail	1
54-8554	.50 inch hole plug grommet	1
54-8250-A	12vdc Power cable with fuse	1

Always verify with Customer Service part revision level



54-8919-C

INTERGATED SHORE POWER

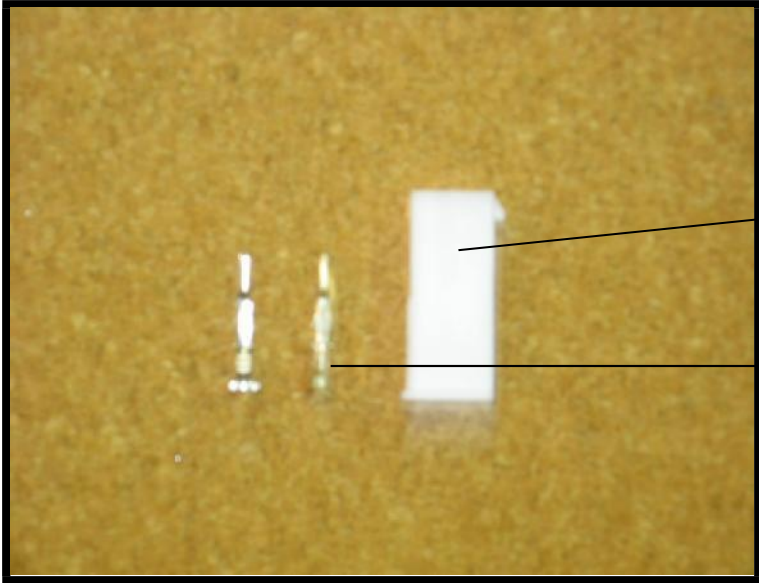


54-8247

54-8248

Shore Power 30amp Fuse and Holder

Always verify with Customer Service part revision level



54-8260

54-8259

Transfer Switch 12v Terminals and Connector

QTY	DESCRIPTION	PKT	QTY
1	10A 15A Charger	54-8206	1
2	Split Case Divider	54-8207	1
3	WPA Transfer Switch	54-8209	1
4	Split Chng Cover base #4	54-8205	1
5	0-077825-01-B	54-8109-A	1
6	Terminal	54-8111-A	3
7	Ring Terminal	54-8226	4
8	Ring Terminal	54-8226	5
9	Female Spade Inverted #12	54-8227	2
10	Ring Terminal	54-8227	2
11	Hexnut 1/2"	54-8128	1
12	Card Grip	54-8179	2
13	Split Chng Top #3	54-8206	1
14	#10-32 XPS Nut	54-8202	2
15	#10-32 XPS Nut	54-8209	2
16	#4 x .25" Type III self tap screw	54-8240	4
17	13-8890 Cable	54-8214	100
18	13-8890 Cable, Orange	54-8214	30
19	Multi-Lok Connector	54-8128-A	1
20	Terminal	54-8110-A	3
21	Shorepower Label	54-8211	1
22	Split connector	54-8240	1
23	Terminal	54-8209	2
24	20" Black Loam	54-8227	5
25	Grounded - Hexnut 0.1332	54-8204	1
27	20" Hexnut	54-8208	1
28	Shorepower Trigger Cable (BAND) spring loaded - black	54-8213	1

** Re-use 8pcs from original assembly

54-8515 (3) pieces 120A FUSE TERMINALS (Include in package)

54-8495 BULKHEAD-MOUNTED 120VAC PLUG (Include in package)

Shore Assy BOM
54-8919-A

Always verify with Customer Service part revision level

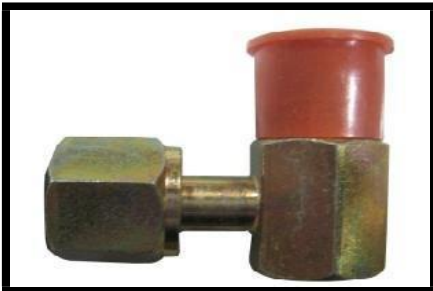


Pop Nut Installation Tool (55-1002)

Always verify with Customer Service part revision level



**Generator Belt Alignment Tool
(55-1010)**



90 degree #6 HVAC Adapter (54-8433)



90 degree #8 HVAC Adapter (54-8434)

Always verify with Customer Service part revision level

56-0100 Pre-Cleaner Assembly

No.	Description	QTY per
54-8491	Pre-Cleaner Adapter	1
54-8490	Pre-Cleaner	1
54-8331	10-32 x .375" Truss Head Screw- Zinc	4
54-8332	Nut, KEPS 10-32 grade 2 zinc	4
54-8079-C	Foam Gasket #32 Hose Clamp, (incl 54-8490)	1
55-8493-A	Front Cover	1

<u>54-8922 Front Step Kit</u>		
No.		QTY
54-	Dynasys Front Step Assembly Instructions	0
54-	1/4 SS Lock Washer	8
54-	1/4-20 x .75" HHB grade 5 zinc	8
54-	6-32 x 1/4 pan head Phillip screw clear	16
54-	Lock tite 262 (.5ml)	1
54-	Dynasys Step Grate	2
54-	Dynasys RH Step Support	1
54-	Dynasys LH Step Support	1
54-	Dynasys Step Latch	4
54-	Dynasys Front Step Box	1

<u>54-8923 Top Step Kit</u>			
No.		QTY	
54-8575	Bracket- Top Step		2
54-8571	Bar grate step		2
54-8367	6-32 x 1/4" PH Philips Screw		8
54-8341	#10 x 5/8 Tek Screw		8
54-8577	Packaging		1
54-8394	Loctite 262		1

Always verify with Customer Service part revision level

55-1001	Dynasys Hole Saw Kit
55-1002	Pop-nut installation tool kit, Dynasys
55-1010	Tool, Generator Belt Alignment- Dynasys
55-119415-59540	Pipe Assy Yanmar Fuel Line
55-26106-080252	Bolt M 8X 25 Plated
55-26106-080652	Bolt M 8X 65 Plated
55-719415-92670	Head Gasket Set, Dynasys Engine
55-8028-E	Dynasys Lower Pan
55-8028-F	Dynasys Lower Pan
55-8029-E	Dynasys LH Side Panel Assembly
55-8030-F	Dynasys Lower Back Panel Aluminum
55-8030-G	Low Back Panel Replacemnt Kit
55-8031-E	Dynasys RH Side Panel
55-8036-E	Dynasys Top Cover Slotted
55-8037-D	Dynasys Access Panel AI Use 55-8493
55-8053-R	Kit 60A Breaker Delete
55-8091-A	Radiator Overflow Bottle & Cap Assy. REV A
55-8091-B	Assy Rad Overflow Bottle & Cap
55-8098-A	Tailpipe Hanger Bracket Kit
55-8099	Air Intake Flex Hose (23 inch piece) Kit
55-8099-A	Air Intake Flex Hose (23"bulk) Kit
55-8099-B	Air Intake Flex Hose (15.5&2.5 for Resonator) Kit
55-8102	Dynasys HVAC Cable to Condenser Box
55-8102-A	Dynasys HVAC Cable to Condenser Box REV A
55-8102-B	Dynasys HVAC Cable to Condenser REV B
55-8103	Harness Assembly, 120VAC
55-8104	Harness Assembly, HVAC Adapter
55-8105	Dynasys ECM Board
55-8120	Cable, PDC to HVAC Power - Direct
55-8121	Cable, Shore Power to HVAC, Direct
55-8121-A	Cable, Shore Power to HVAC Direct -A
55-8122	PDC to ShorePower Cable-Retrofit
55-8123	Cable, Pigtail - Shore Power 110V
55-8123-A	Cable, Pigtail - Shore Power 110V -A
54-8127-F-R	HVAC PCBA Rev. -F Service Kit
55-8155-R	Compressor Cover-Retrofit
55-8161	9" HVAC Blower Fan Assembly
55-8183	Radiator Field Replacement Kit (sml)
55-8230	Dynasys Fuel Hose Kit
55-8251	Dynasys Shore Power to HVAC Cable 12G (foot)
55-8257	Dynasys #6 O-Ring
55-8262-R	Kit Fan Freeze Delete
55-8267-D	Kit for 120V Pigtail Replacement
55-8267-R	Cable, 110V APU Retrofit Pigtail
55-8267-R-A	Cable, APU 110vac Pigtail
55-8272-DF	Plate, Adapter HVAC PCB
55-8413	Dynasys Compressor Assembly

Always verify with Customer Service part revision level

55-8413-R	Dynasys Compressor Assembly (Reman)
55-8414	Dynasys Controller Assembly (Keypad Style)
55-8460	Dynasys CCU 32 bit
55-8461	Combined CCUv6/ECMv5 Set Kit
55-8462	Dynasys CCU Control Assembly TFT (v 1.14)
55-8462-A	Dynasys CCU Control Assembly TFT (v 2.301)
55-8462-AR	Dynasys CCU Control Assembly TFT (v 2.303) Reman
55-8462-B	Dynasys CCU Control Assembly TFT v3.310
55-8462-BR	Dynasys CCU Control Assembly TFT v3.310 Reman
55-8462-C	CCU Control Assembly TFT v4.0 Upgrade Kit
55-8462-D	Dynasys CCU Control Assembly TFT DEFECT
55-8462-E	CCU v5.0 Field Upgrade Service Kit
55-8462-F	CCU Control Assembly TFT v6.0 Upgrade Kit
55-8462-F-RW	Reworked CCU v6.0 Upgrade Kit
55-8463	Dynasys ECM Control Assembly TFT (v 1.5)
55-8463-A	ECM Control Assembly TFTv 2.25
	Dynasys ECM Control Assembly TFT (v 2.253)
55-8463-AR	Reman
55-8463-B	Dynasys ECM Control Assembly TFT v2.260
55-8463-BR	Dynasys ECM Control Assembly TFT v2.260 Reman
55-8463-C	TFT ECM v3.0 Field Service Kit
55-8463-D	Dynasys ECM Control Assembly TFT DEFECT
55-8463-E	ECM Control Assembly v5.0 Field Service Kit
55-8463-E-RW	Reworked ECM v5.0 Upgrade Kit
55-8490	Dynasys Optional Pre-Cleaner Filter
55-8491	Dynasys Optional Pre-Cleaner Filter Adapter
55-8492	TSB kit for water separator mounting change
55-8493	Front Cover Kit
55-8497	Dynasys Coolant Bottle Assembly w/ sensor
55-8497-A	Coolant Bottle Assembly w/ sensor (o cap)
55-8501	TSB Kit for Generator Pulley Fix
55-8502	TSB Block Temp. Switch Jumper Kit
55-8503	TSB Kit for Orange Loom Upgrade
55-8504	Front Engine Mount Upgrade Kit
55-8505	Relay Harness Field Service Kit
55-8506	Hella Relay 4RD007 794-030 Kit
55-8901	PDC Retrofit Kit 54-8101-A to -E
55-8902	PDC Retrofit Kit (from 54-8101-F)
55-8902-A	PDC Retrofit Kit (from 54-8101-F) -A
55-8902-B	PDC Retrofit Kit -B
55-8907	Retro Kit Flex to Fixed Pipe
55-8916	HVAC Adaptor Kit
55-8918	Shore Power System Modified
55-8918-A	Shore Power System, P & T
55-8919-R	Shore Power Retrofit Kit
55-8919-RA	Shore Power Retrofit Kit
55-8919-RB	Shore Power Retrofit Kit -B
55-8919-RC	Shore Power Retrofit Kit -C
55-8920	Shore Power Retrofit Kit - P&T

Always verify with Customer Service part revision level

55-8920-A

Shore Power, P & T Retrofit Kit

55-8928

Retro Kit Fixed Pipe no Quiet Pkg

Always verify with Customer Service part revision level